

ESET Tech Center

Knowledgebase > ESET PROTECT On-prem > Cloning computers in ESET PROTECT: Create a new computer every time

Cloning computers in ESET PROTECT: Create a new computer every time

Steef | ESET Nederland - 2021-03-19 - Comments (0) - ESET PROTECT On-prem

Issue

- You are cloning a computer from one master computer and you need to recognize each new clone as a new computer. You do not want clones to be able to recover their identities.
- [Set the master computer after the computer was cloned](#)
- [Mark the master computer before cloning](#)

Details

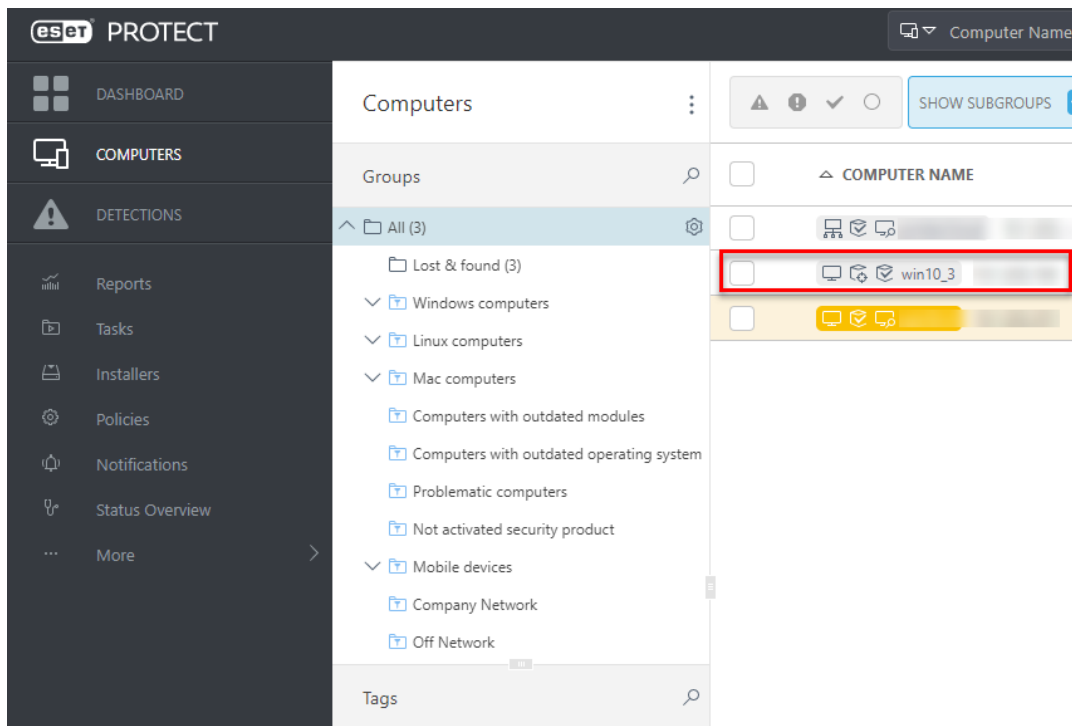
Review the [supported features of hypervisors](#). Do not use this setting with VDI environments.

Solution

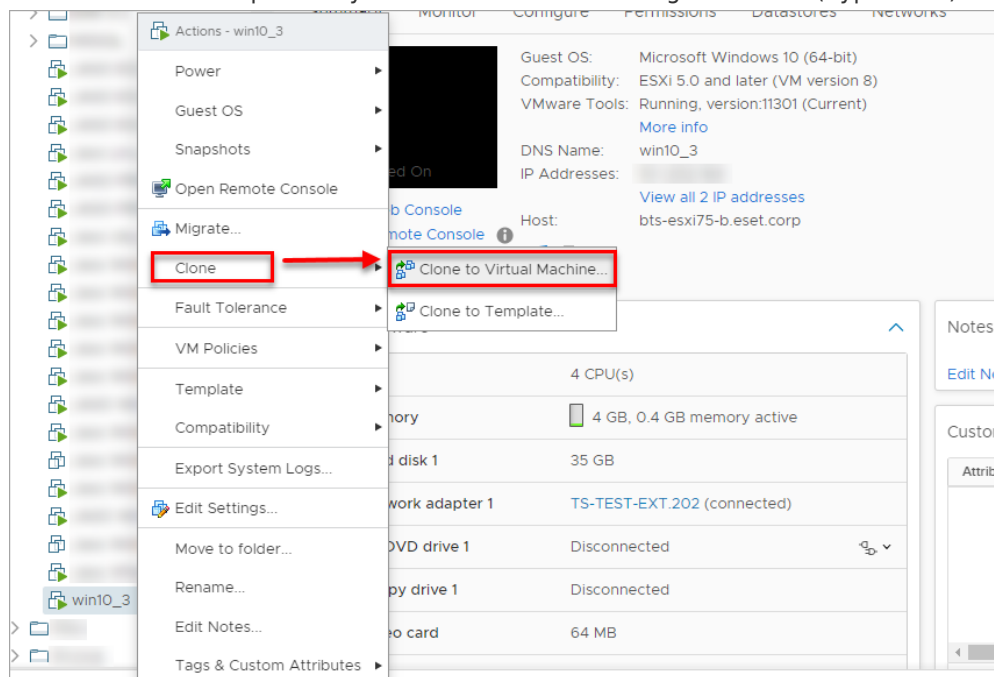
This article demonstrates an example situation using the VMware® vSphere web client. You can use these same steps with other [supported hypervisors](#). For more information about resolving cloning questions, [click here](#).

Mark a cloned machine as a master computer

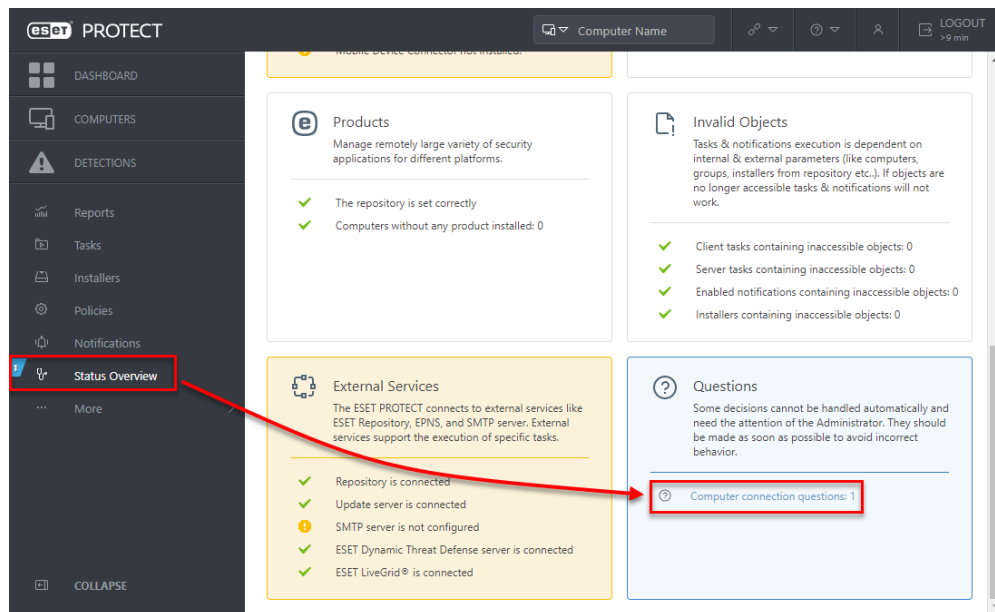
Prerequisites: You already have ESET PROTECT installed and running. You also have at least one client computer with ESET Management Agent installed and connected to your ESET PROTECT Server.



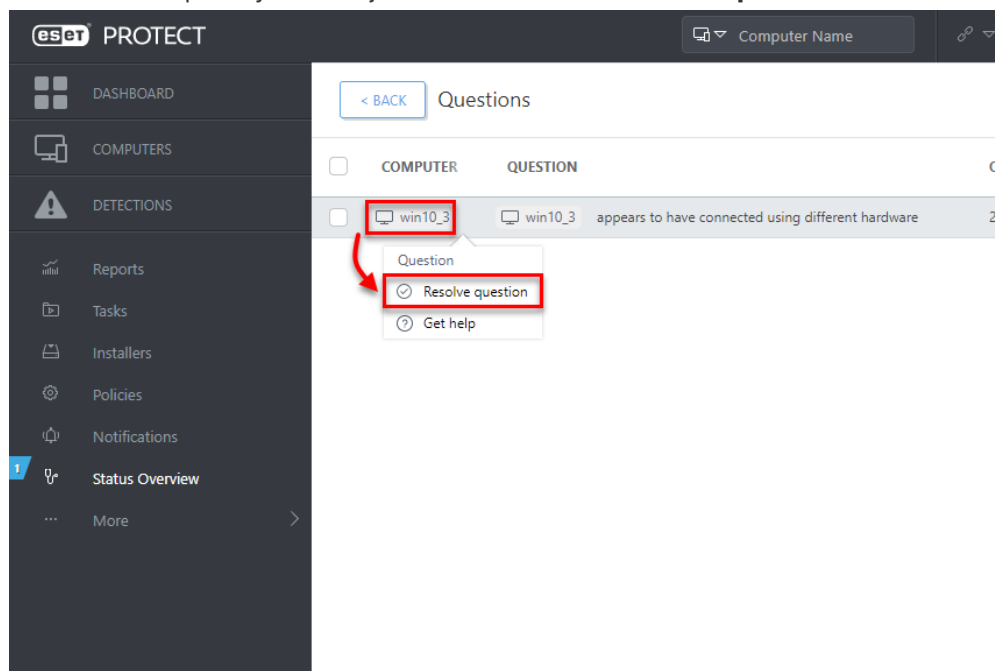
1. Clone the client computer in your virtual machine management tool (hypervisor).



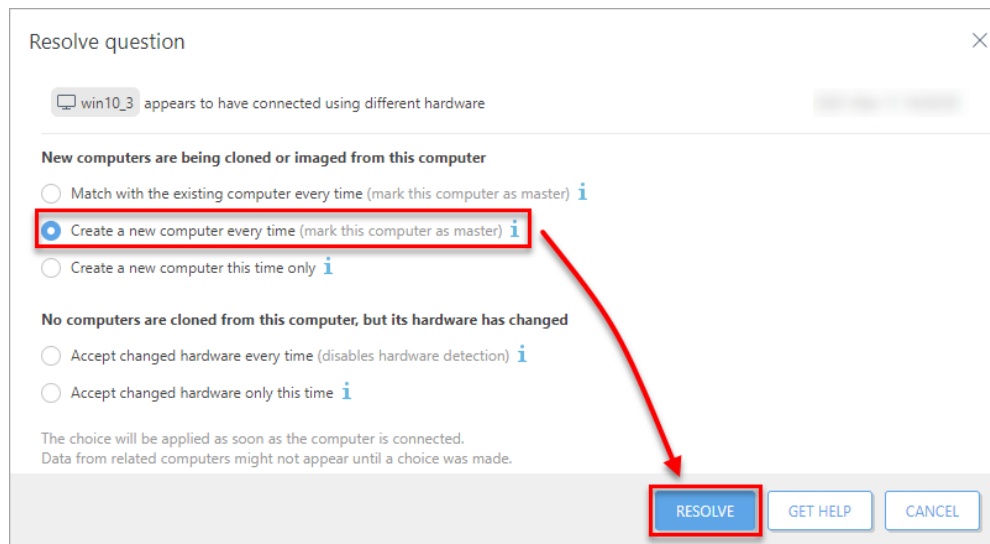
2. After cloning is complete, start the clone.
3. Wait a few moments until the machine is started. When the startup is complete, the Agent on the cloned computer will connect to ESET PROTECT Server. ESET PROTECT Server will recognize that this is the clone of an existing client computer already connected to ESET PROTECT.
4. Click **Status Overview** → **Questions** → **Computer connection questions**.



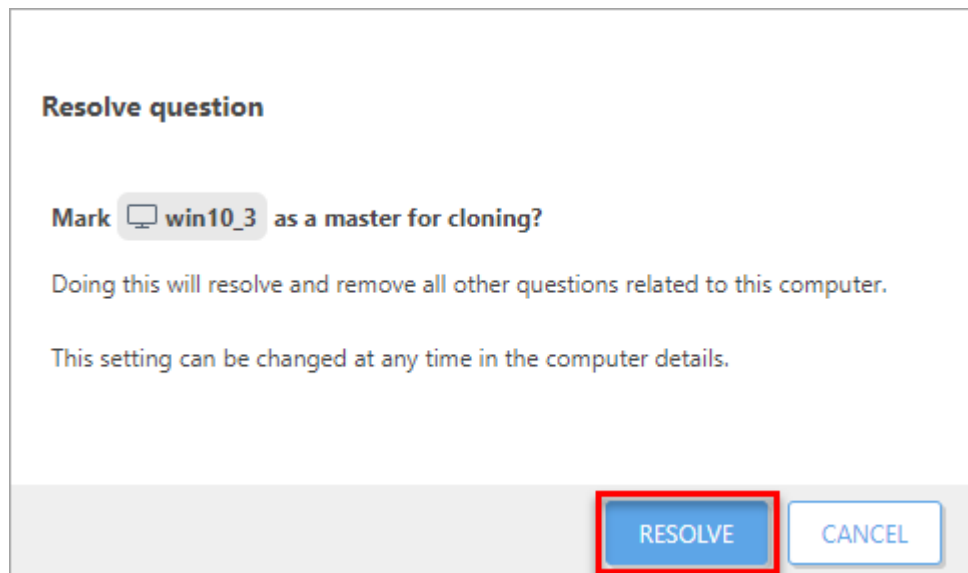
5. Select the computer you have just cloned and click **Resolve question**.



6. Select **Create a new computer every time** to set the selected computer a master computer. All clones of this computer would be recognized as new computers and will have unique identities in ESET PROTECT Web Console. Click **Resolve**.



7. Click **Resolve** to confirm setting the selected computer as a master. All other unresolved clones of this computer would be resolved automatically.



8. Wait a few minutes for the cloned machine to connect at least two times (two replication intervals). Click **Computers** to see the new identity assigned to the clone. The name of cloned computer will be the same by default, but it will have a unique IP address. The clone is now independent of the master computer.

