

ESET Tech Center

Knowledgebase > Diagnostics > Create a full memory dump of a VMware virtual machine

Create a full memory dump of a VMware virtual machine

Steef | ESET Nederland - 2023-06-05 - Comments (0) - Diagnostics

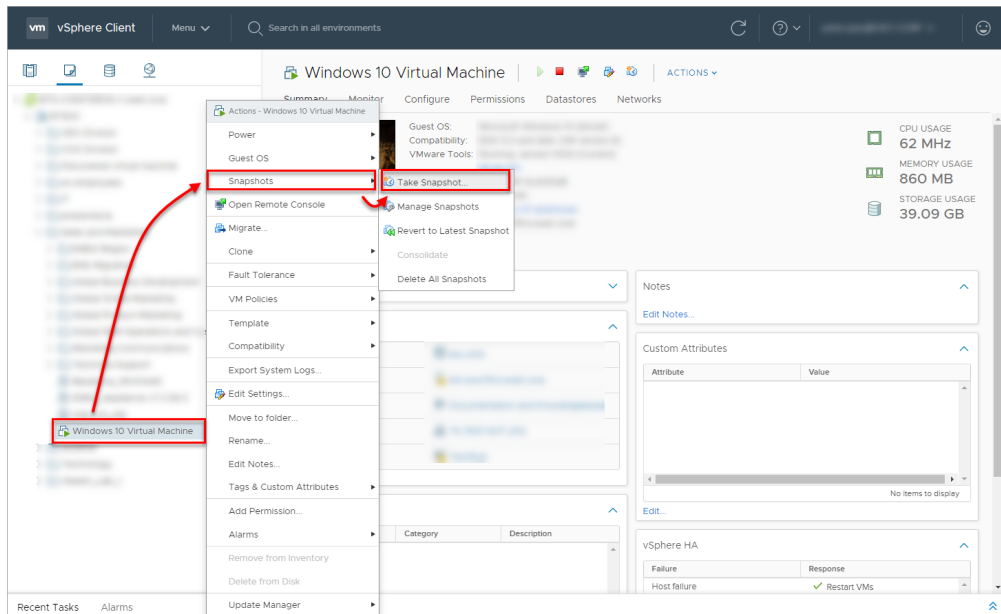
Issue

- You are running an ESET product on a VMware virtual machine
- You need to create a memory dump of a VMware virtual machine for troubleshooting purposes
- [I. Create and download a virtual machine snapshot](#)
- [II. Use the vmss2core tool to create a memory dump from the virtual machine snapshot](#)

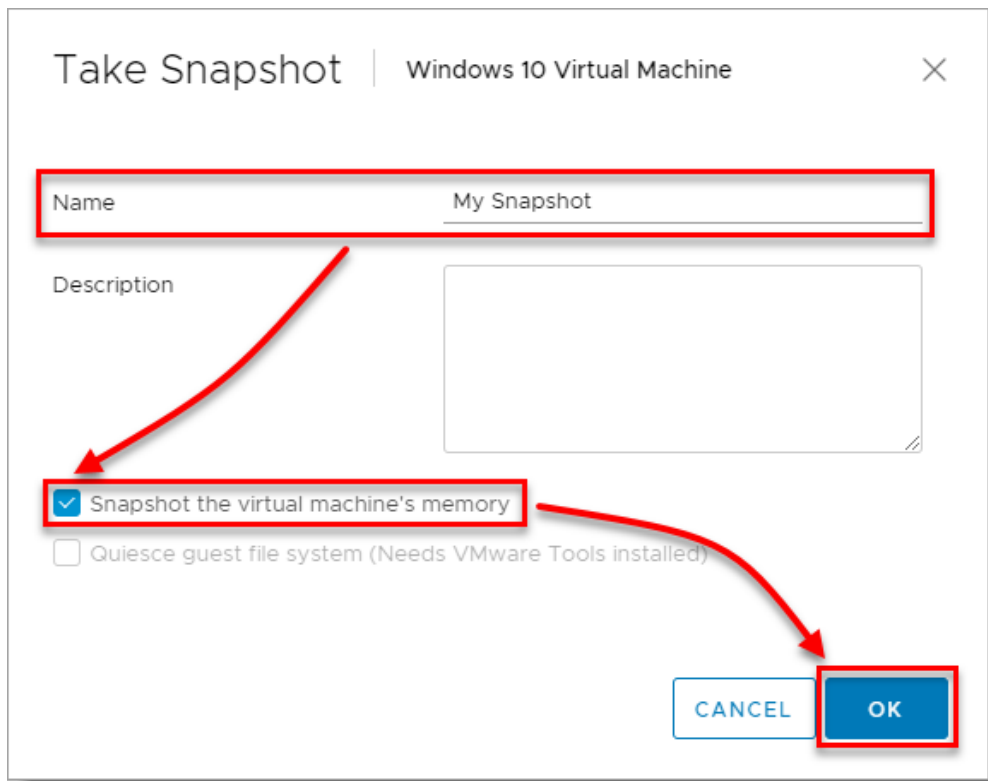
Solution

I. Create and download a virtual machine snapshot

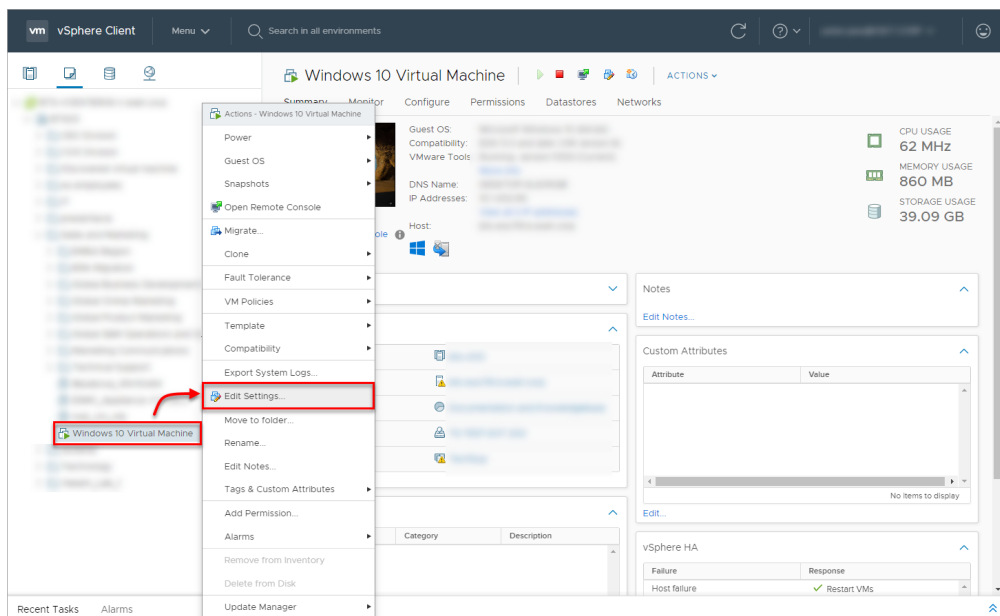
1. In the VMware environment, select the virtual machine that has issues.
2. Replicate the issue on the virtual machine.
3. Right-click the virtual machine → **Snapshots** → **Take snapshot**.



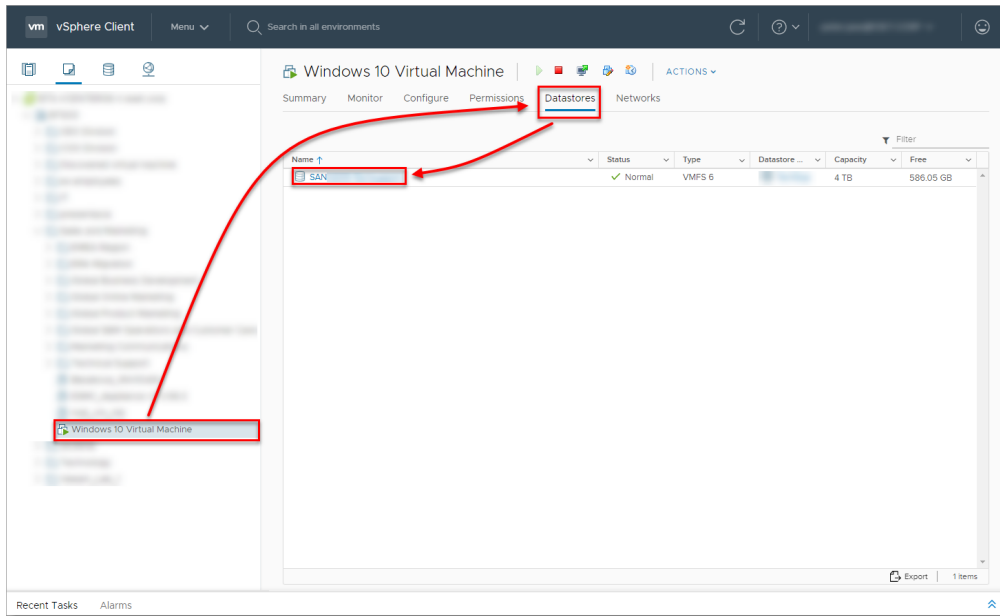
4. Type the name, select the check box next to **Snapshot the Virtual Machine's memory** and click **OK**.



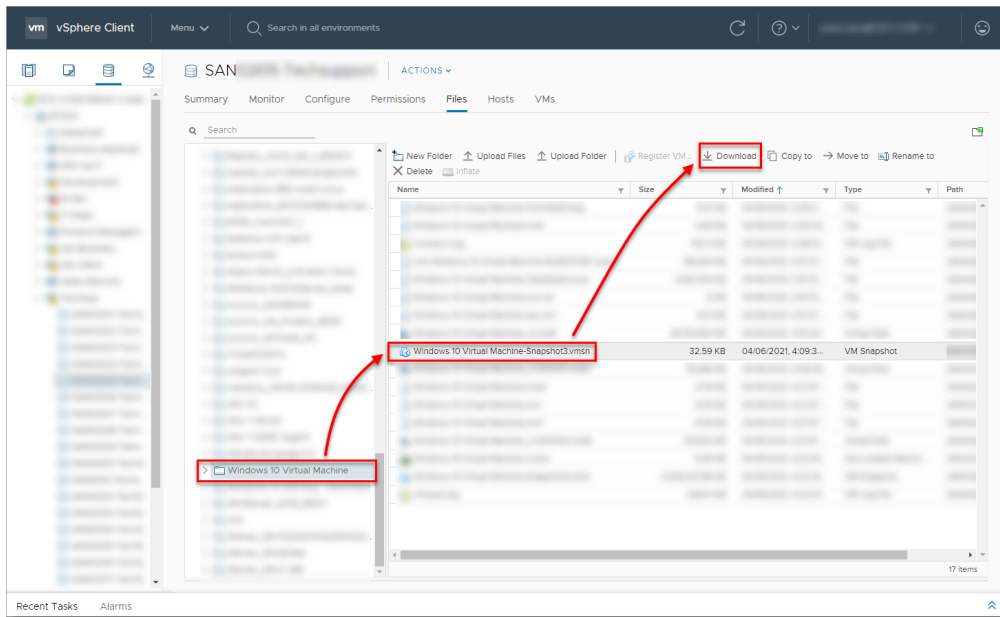
5. Right-click the virtual machine and select **Edit Settings**.



6. Select the virtual machine → click **Datastores** and click the datastore name.

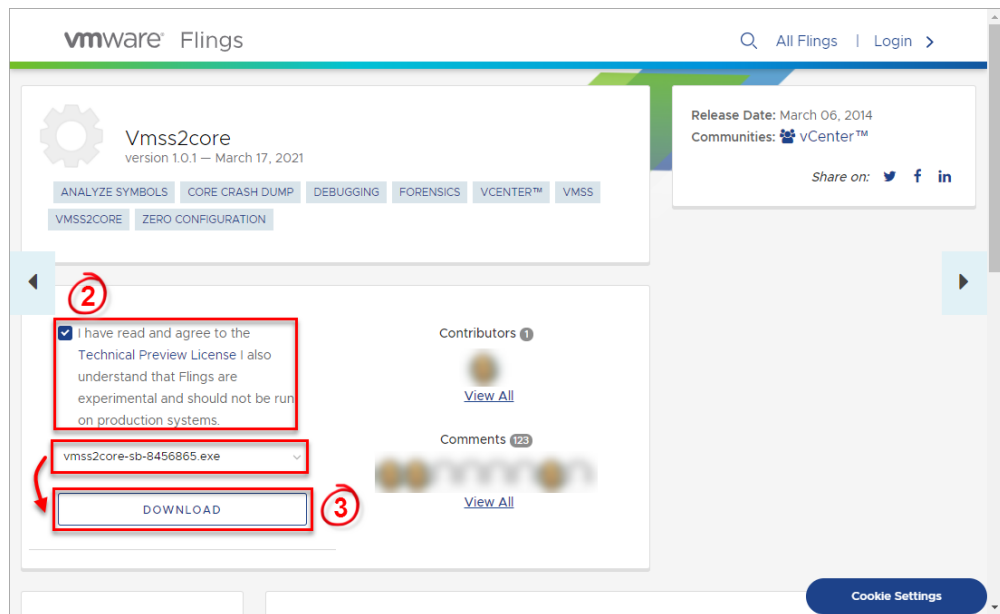


7. Select the virtual machine, select the .vmsn file ([VMware Snapshot file](#)), click **Download** and save the file locally.



II. Use the vms2core tool to create a memory dump from the virtual machine snapshot

1. [Download Vmss2core](#).
2. Select the check box next to **I have read and agree to the Technical Preview License I also understand that Flings are experimental and should not be run on production systems.**
3. Select the file for your operating system from the drop-down menu (for example, if you want to run the tool on Windows, select `vmss2core-sb-8456865.exe`) and click **Download**.



4. Place the [vmss2core tool](#) and the VMware snapshot file (downloaded in Step 7) into the same folder.
5. Run the `vmss2core` (`vmss2core-sb-8456865.exe` in this example) in the command line with the following parameters:
 - Specify the guest operating system from which the snapshot was created:
 - `-W8` —Windows 8 and later or Windows Server 2012 and later.
 - `-W` —Windows 7 and older or Windows Server 2008 and older.
 - Virtual machine snapshot filename (for example, `virtual_machine_name.vmsn`).



```
vmss2core-sb-8456865.exe -W8 "virtual_machine_name.vmsn"
```

6. When the vmss2core tool completes the operation, it creates a memory dump file named memory.dmp that can be used for additional troubleshooting.

Related Content

- [How do I generate a memory dump manually?](#)
- [How to create a Wireshark log](#)
- [Run the Info_get.command on a Linux machine and send the logs to ESET Technical Support](#)
- [Using tcpdump on a MacOS](#)
- [Using Process Monitor to create log files](#)
- [Using tcpdump on a Virtual Appliance](#)
- [How do I use ESET Log Collector?](#)