

ESET Tech Center

[Knowledgebase](#) > [ESET Endpoint Encryption](#) > [Encrypt additional disks or disk partitions from ESET Endpoint Encryption Server](#)

Encrypt additional disks or disk partitions from ESET Endpoint Encryption Server

Steef | ESET Nederland - 2021-05-19 - [Comments \(0\)](#) - [ESET Endpoint Encryption](#)

Issue

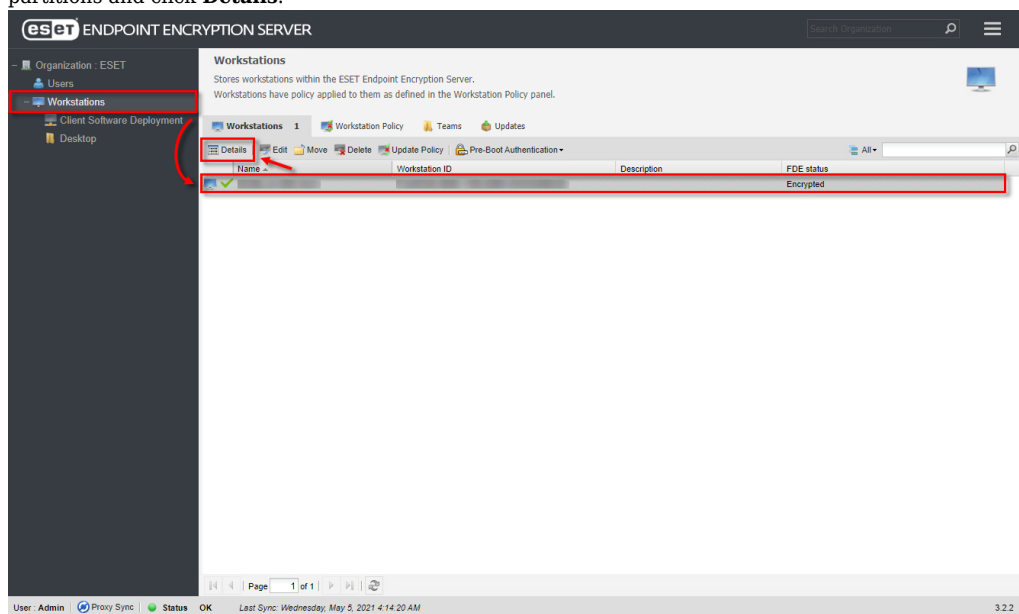
- Encrypt additional or secondary disks or disk partitions from ESET Endpoint Encryption Server

Details

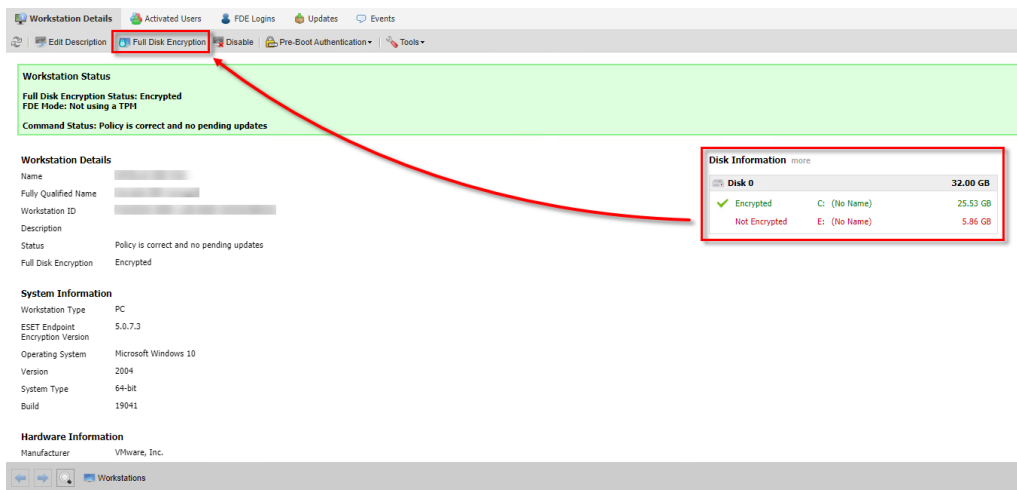
You can encrypt secondary or additional disks and disk partitions of workstations that are managed by the ESET Endpoint Encryption Server.

Solution

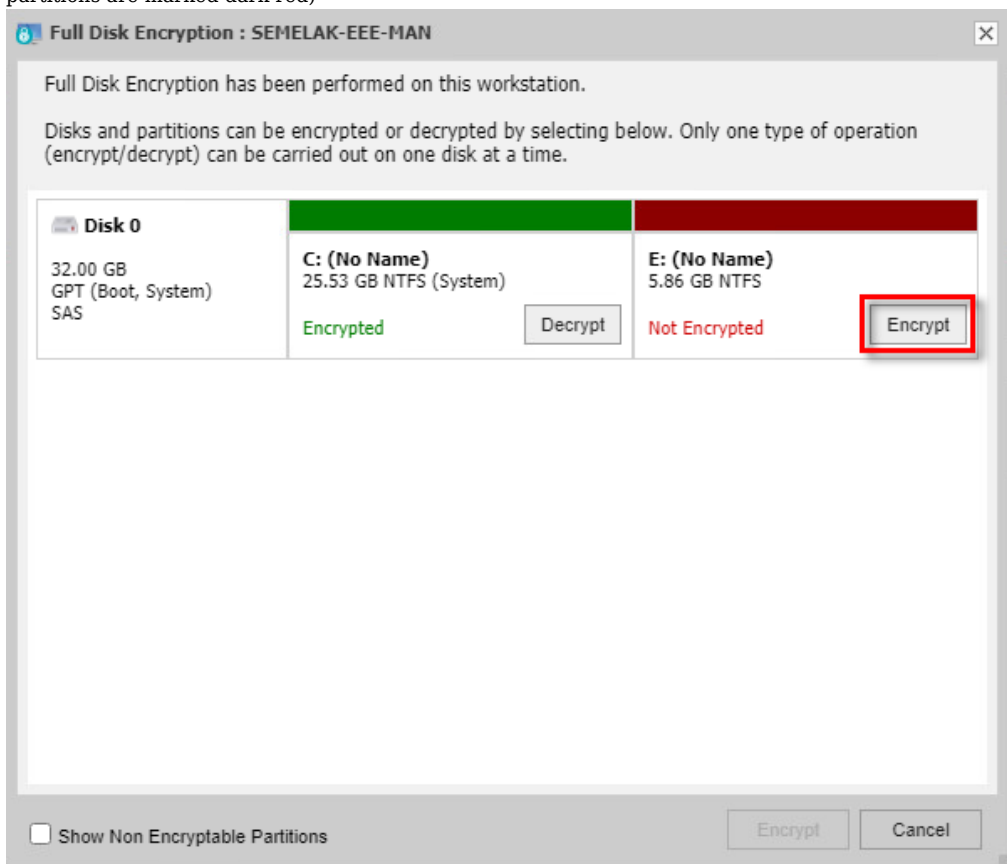
1. Log in to the ESET Endpoint Encryption (EEE) Server.
2. Click **Workstations**, select the workstation on which you want to encrypt additional disks or disk partitions and click **Details**.



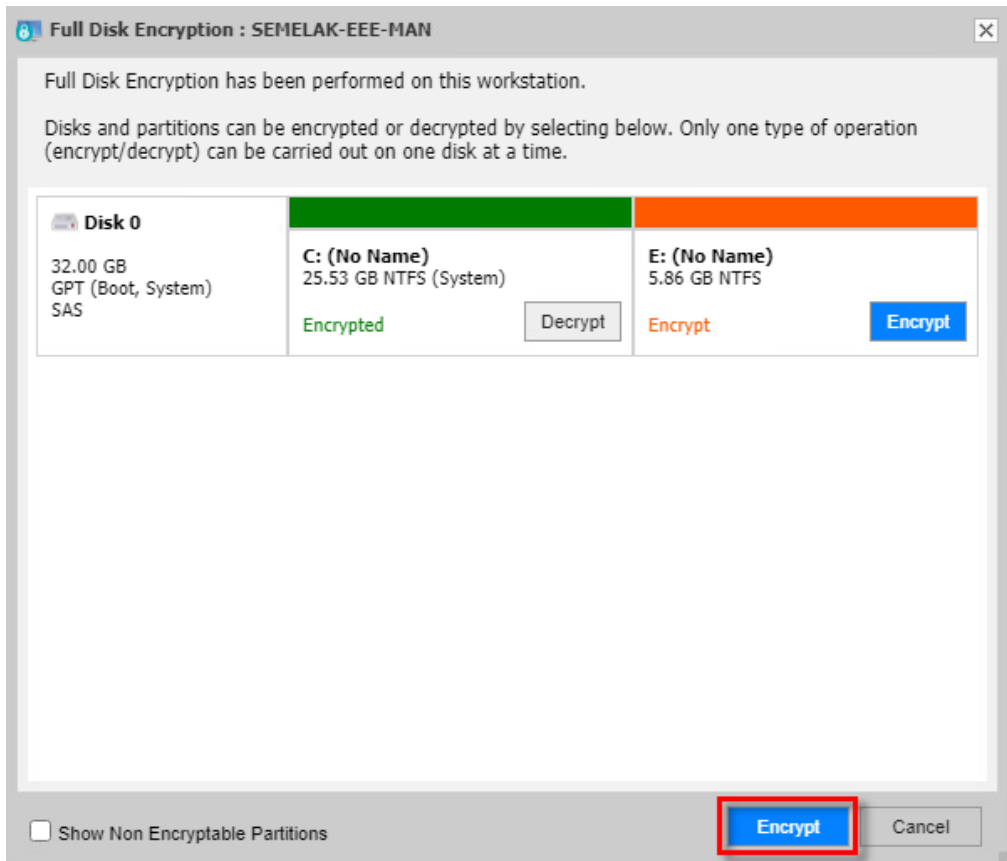
3. In the **Disk Information** section, ensure that the encryption progress of other disks has been completed and click **Full Disk Encryption**. The **Full Disk Encryption** option is only available if other encryption/decryption processes are completed.



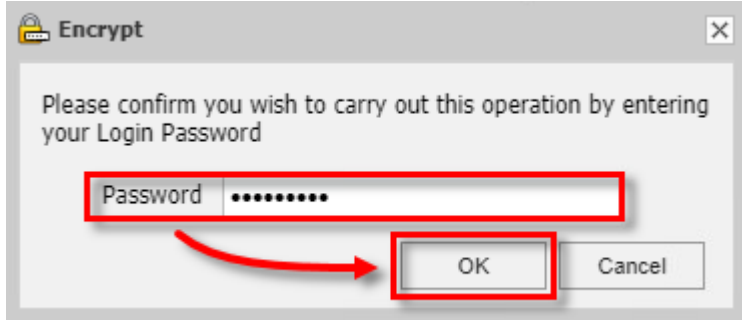
4. Click **Encrypt** next to the disks or disk partition you want to encrypt (unencrypted disks or disk partitions are marked dark red)



5. Click **Encrypt** in the bottom right corner of the dialog window.



6. Type your EEE Server login password and click **OK** to confirm the operation.



The encryption command will be received automatically when the workstation next checks in with the cloud. To speed up the process, you can [manually synchronize the ESET Endpoint Encryption Client and Server](#).