

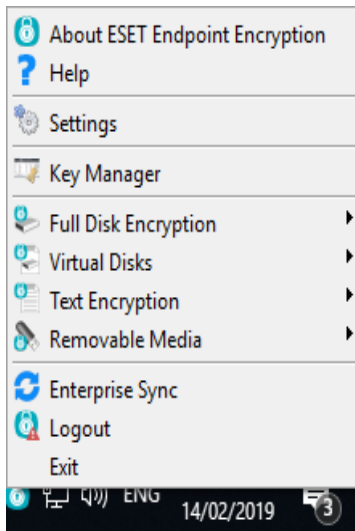
ESET Tech Center

Knowledgebase > ESET Endpoint Encryption > Diagnostics > How do I find which version of ESET Endpoint Encryption is installed?

How do I find which version of ESET Endpoint Encryption is installed?

Anish | ESET Nederland - 2019-07-17 - Comments (0) - Diagnostics

Right click on the ESET Endpoint Encryption (EEE) icon in the system tray. Select About **ESET Endpoint Encryption** from the menu.



The version number of EEE is displayed in the About box as shown below.



Alternative Method for Managed Users

For managed EEE clients, there is a report in the EEE Server that lists the EEE version of all client machines.

To run this report, please follow these steps:

1. click on the **Organisation** name on the left-hand side of the screen.
2. Select the **Reporting** tab.
3. Highlight **ESET Endpoint Encryption Client Version** in the list of reports.
4. Finally, select **Run in Window**, **Download as CSV** or **Download as PDF** as desired.

If the DESlock+ Version is displaying as 'not available', it is because a user has been issued a licence however they have yet to activate their version of DESlock+.

The screenshot displays the ESET Endpoint Encryption Server web interface. The top navigation bar includes the ESET logo, the text 'ENDPOINT ENCRYPTION SERVER', a search box for 'Search Organisation', and a menu icon. The left sidebar shows a tree view with 'Organisation : ESET' selected, indicated by a red circle with the number '1'. Below it are 'Users', 'Workstations', and 'Client Software Deployment'. The main content area is titled 'ESET Organisation Management' and contains a sub-menu with 'Encryption Key Groups', 'Encryption Keys', 'Tasks', 'Licences', and 'Reporting' (the latter marked with a red circle and the number '2'). Under the 'Reporting' tab, there are three action buttons: 'Run in Window' (marked with a red circle and the number '4'), 'Download as CSV', and 'Download as PDF'. A list of reports is shown, with 'ESET Endpoint Encryption Client Version' selected and highlighted (marked with a red circle and the number '3'). Below the list, a description reads: 'Reports the version of the ESET Endpoint Encryption client on all workstations'. The bottom status bar shows 'User : admin', 'Proxy Sync' status, 'Status OK', 'Last Sync: 14 February 2019 12:25:11', and the version '2.10.15'.