

# ESET Tech Center

Knowledgebase > ESET PROTECT On-prem > Deploy the ESET Management Agent to a macOS client using Agent Live Installer (8.x)

## Deploy the ESET Management Agent to a macOS client using Agent Live Installer (8.x)

Steef | ESET Nederland - 2021-01-14 - Comments (0) - ESET PROTECT On-prem

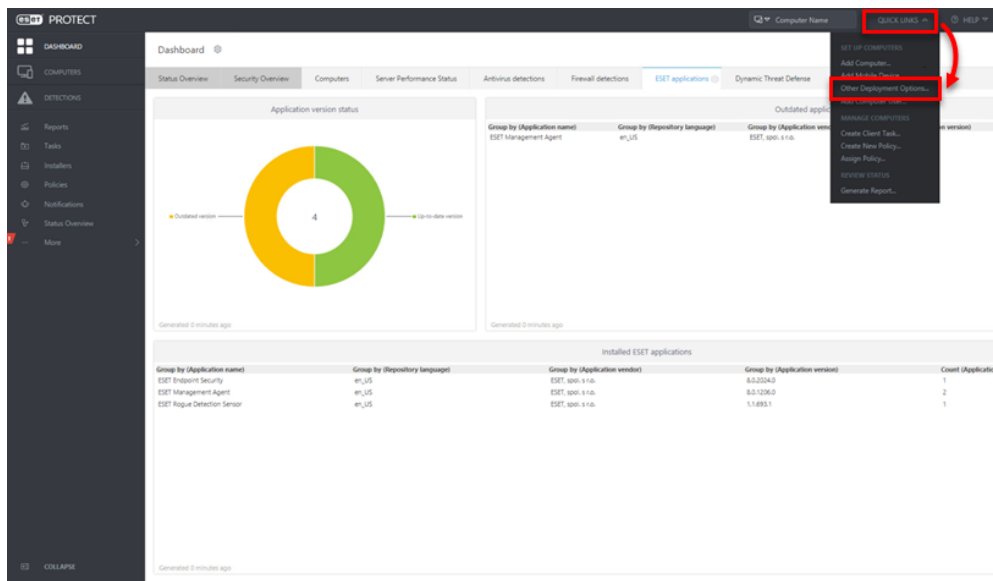
### Issue

- When deploying the ESET Management Agent Live Installer to a macOS client, the package is distributed as a .tar.gz file
- Extract PROTECTAgentInstaller.tar.gz and install the ESET Management Agent

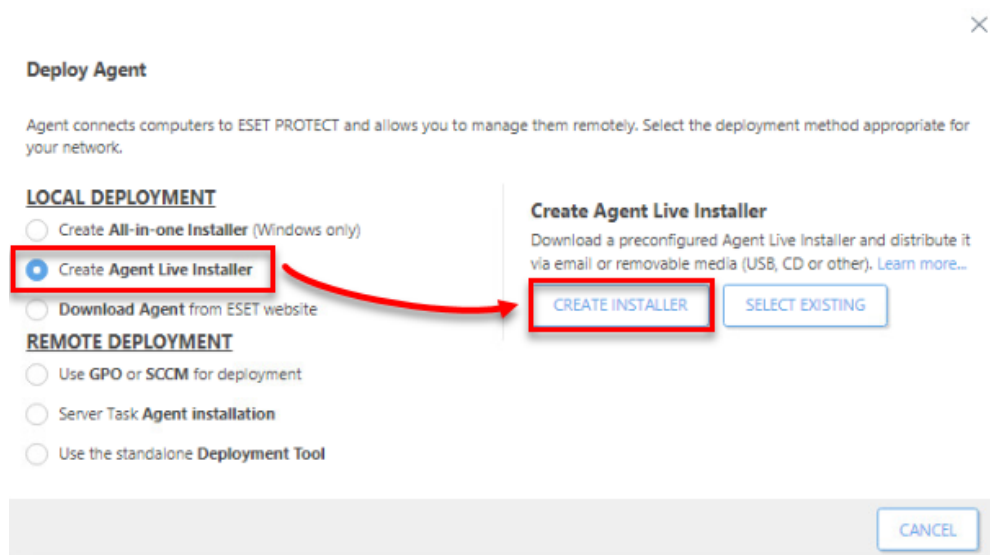
### Solution

Peer certificates and Certification Authority that are created during the installation are by default contained in the Static Group All.

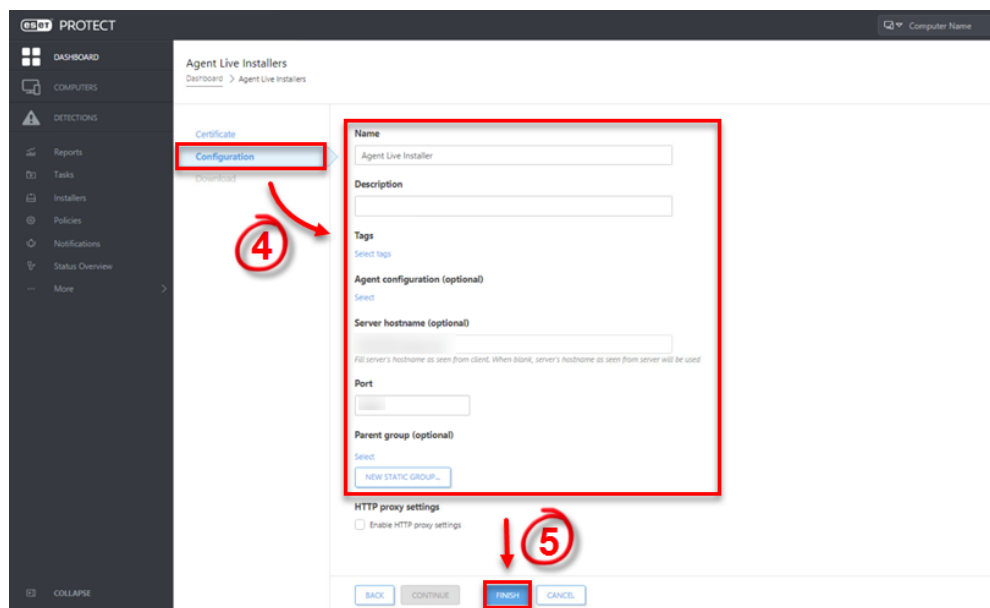
1. [Open ESET PROTECT Web Console](#) in your web browser and log in.
2. Click **Quick Links → Other Deployment Options**.



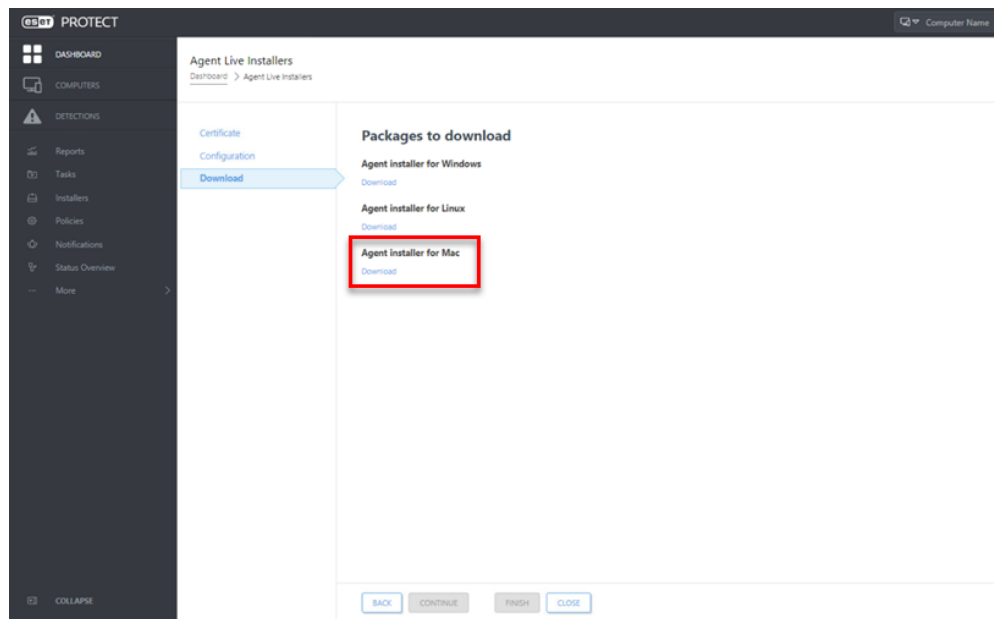
3. Select **Create Agent Live Installer**; you can select **Create Installer** or **Select Existing**. In this example, **Create Installer** option is selected.



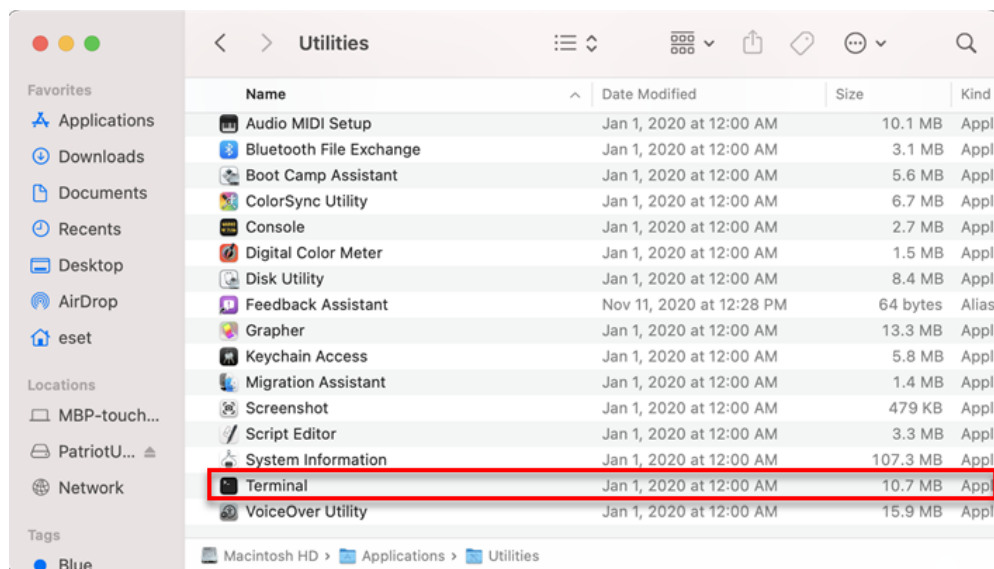
4. Deselect the check box **Participate in product improvement program** if you do not agree to send crash reports and telemetry data to ESET. If the check box is left selected, telemetry data and crash reports will be sent to ESET. Click **Configuration** where you can change the **Name** for the Agent Live Installer, change **Server Hostname** (optional) and select **Parent group** where the computer will be contained after the installation (optional).
5. Click **Finish**.



6. Click **Download** under **Agent Installer for Mac**. Make note of the file's saved location.



7. Distribute the Live Installer file to your Apple client using email, a shared network folder, or whatever means you choose. Download the file to the Desktop on your client.
8. After you have downloaded the file to the client, double-click **PROTECTAgentinstaller.tar.gz** to extract the file. **PROTECTAgentinstaller.sh** will be extracted to your Desktop.
9. Click **Go** → **Utilities** and then double-click **Terminal** to open a new Terminal window.



10. In your new Terminal window, enter the following commands:
  1. `cd Desktop`
  2. `bash PROTECTAgentinstaller.sh`

! Users of macOS Sierra and later need to use root access

If you are using macOS Sierra and later, run the command:

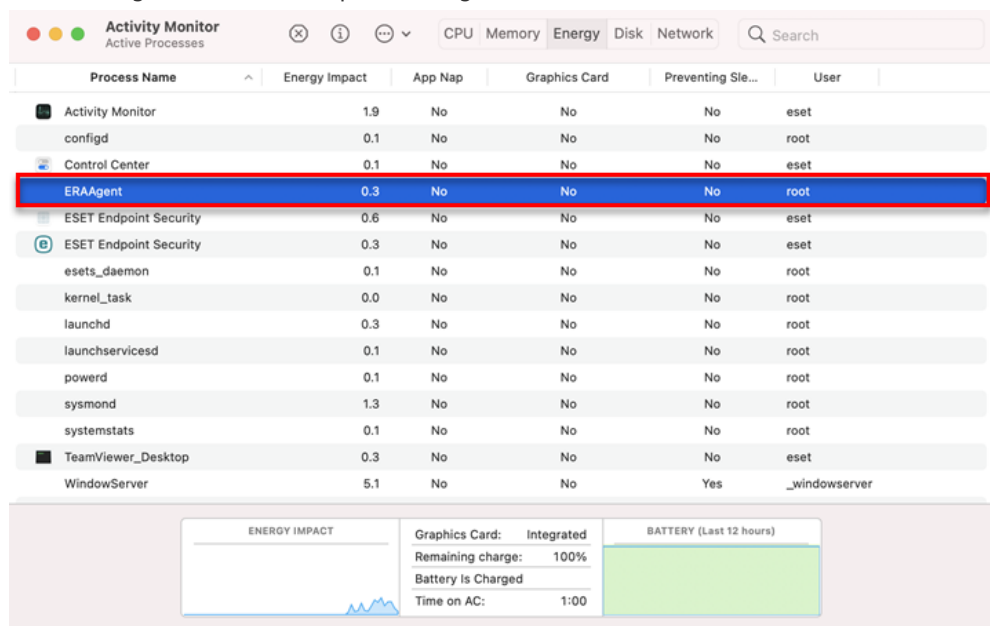
```
sudo bash PROTECTAgentinstaller.sh
```

instead of:

```
bash PROTECTAgentinstaller.sh
```

in step 10b.

11. When you are prompted for your password, type the password for your user account. Though characters will not appear, your password will be entered. Press **Return** when you are finished to continue the installation.
12. Click **Go → Utilities** and then double-click **Activity Monitor**. Click the **Energy** tab and locate the process called **ERAAgent** to verify that the Agent is running. You can now manage this client computer using ESET PROTECT.



13. If you are performing a new installation of ESET PROTECT, proceed to Step 5, [deploy ESET endpoint products to your client computers](#).