

ESET Tech Center

Kennisbank > Legacy > Deploy the ESET Management Agent and the ESET endpoint product together (8.x)

Deploy the ESET Management Agent and the ESET endpoint product together (8.x)

Steef | ESET Nederland - 2020-12-11 - Reacties (0) - Legacy

Issue

- ESET PROTECT enables you to create a package to install the ESET Management Agent and ESET endpoint product (Windows only) together
- The All-in-one installer now contains the ESET Management Agent, ESET product, License, and Policy in a pre-configured .exe installer package

This method is for local installations and an Admin should run it for the following reasons:

- It requires user interaction on the client workstation
- It requires a domain admin account (not a regular user account)
- It is possible to extract the certificate passphrase on the client workstation because it is embedded in the .exe file

The ESET Management Agent can also be installed using Live Installer, deployed remotely or installed manually (a local installation of the ESET Management Agent only). Click for more options to [deploy the ESET Management Agent](#).

Details

The ESET Management Agent facilitates communication between client computers and other ESET PROTECT components such as the ESET PROTECT Server. ESET Management Agent must be installed on all client computers where other ESET PROTECT components or ESET endpoint products are installed.

Solution

Create an All-in-one installation package in ESET PROTECT Web Console

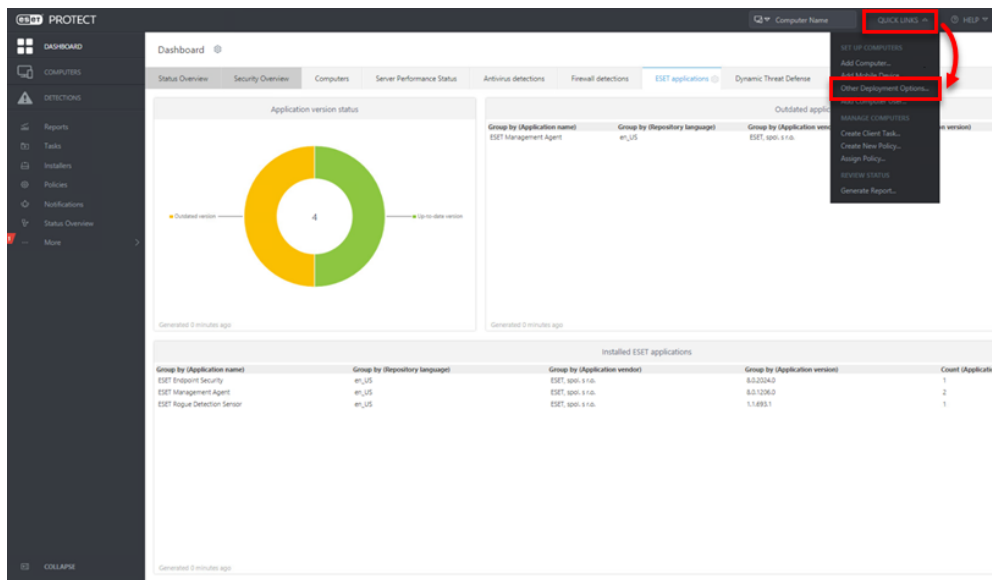
Follow the instructions below to use ESET PROTECT to create an installation package including ESET Management Agent, ESET Windows endpoint products, Policy, License and ESET PROTECT management configuration.



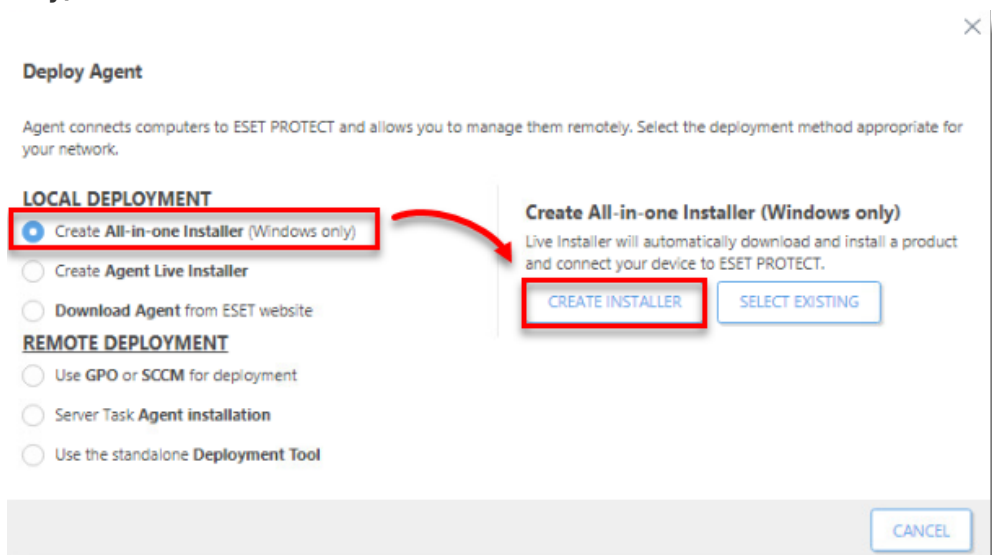
Silent installation

To run the installation with no user interaction, see [silent installation](#) below.

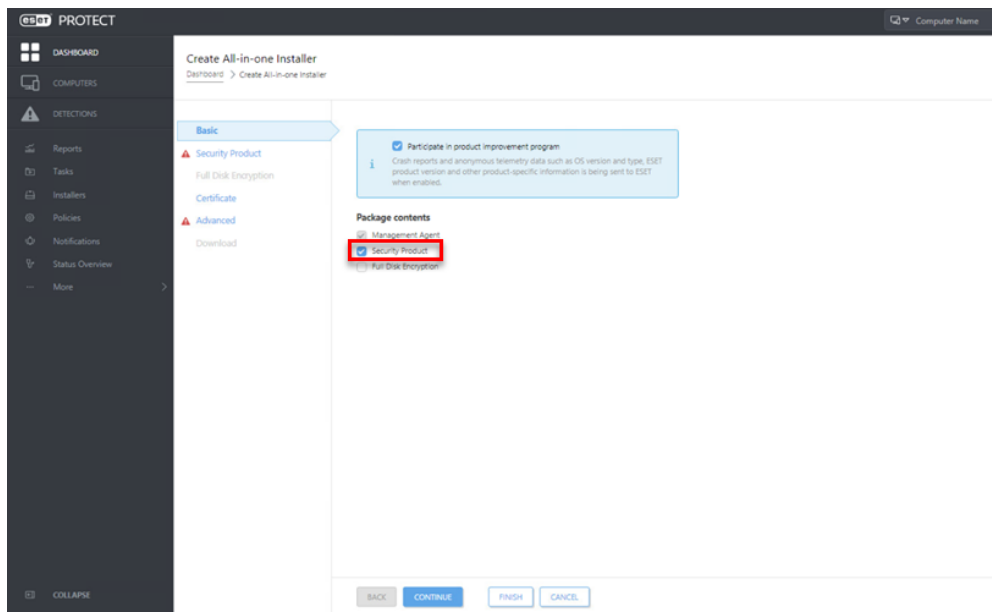
1. Click **Quick Links** → **Other Deployment Options**.



- In the **Local Deployment** section, select **Create All-in-one installer (Windows only)** and then click **Create Installer**.




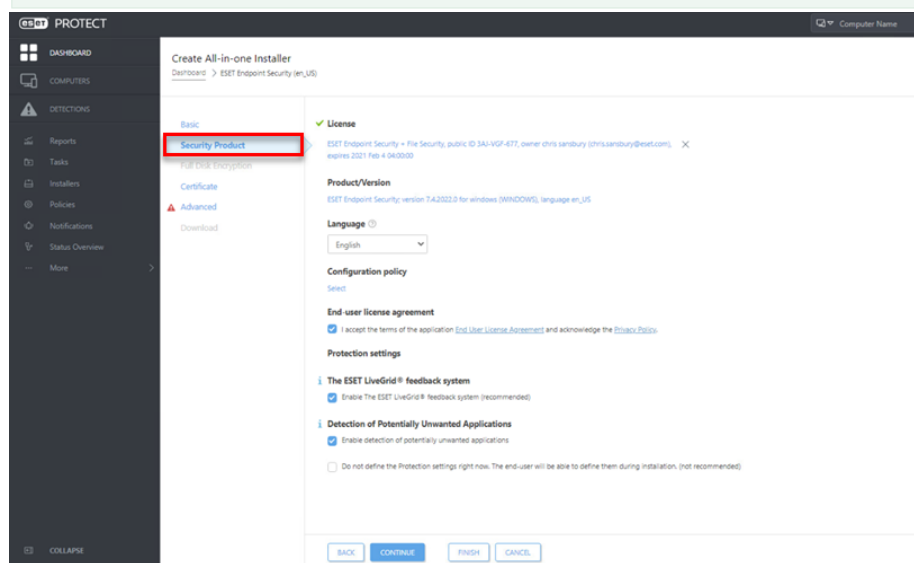
- Under **Package contents**, select the check box next to **Security product**. If you have an active [ESET Full Disk Encryption](#) license, you can select the check box next to **Full Disk Encryption**. Deselect the check box next to **Participate in product improvement program** if you do not agree to send crash reports and telemetry data to ESET.



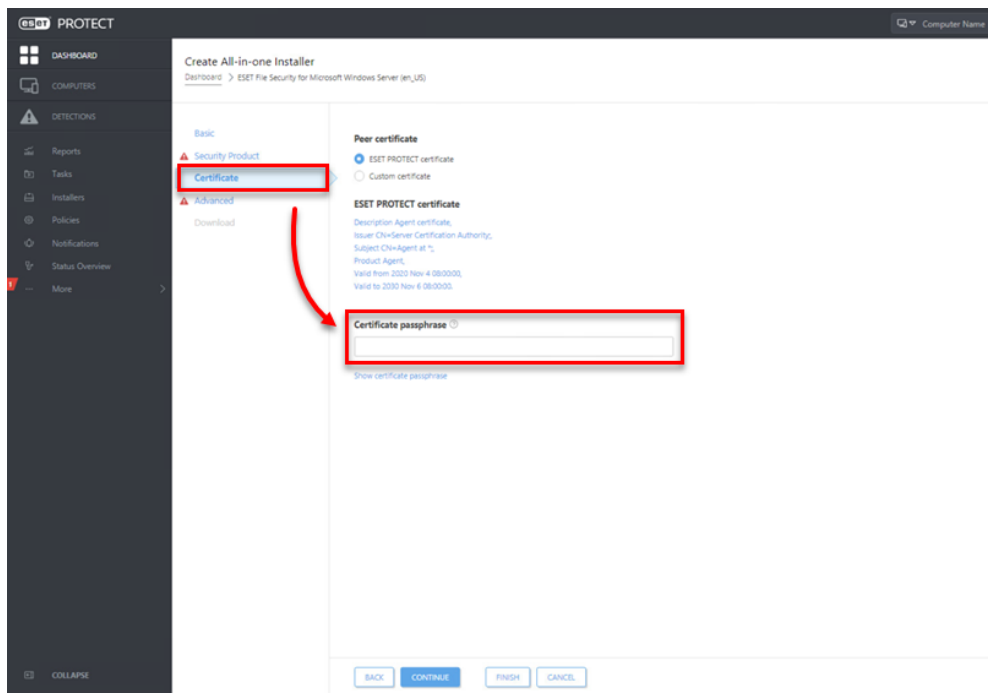
4. Click **Security Product**. In this section you can:

- Select the **license**.
- Click the list of products under **Product/Version** and select an ESET endpoint product.
- **Language** (optional) - Select another language of the installer wizard.
- **Configuration Policy** (optional) - Select a policy that will be applied to the ESET security product.
- Select the check box next to **I accept the terms of the application End User License Agreement and acknowledge the Privacy Policy**.

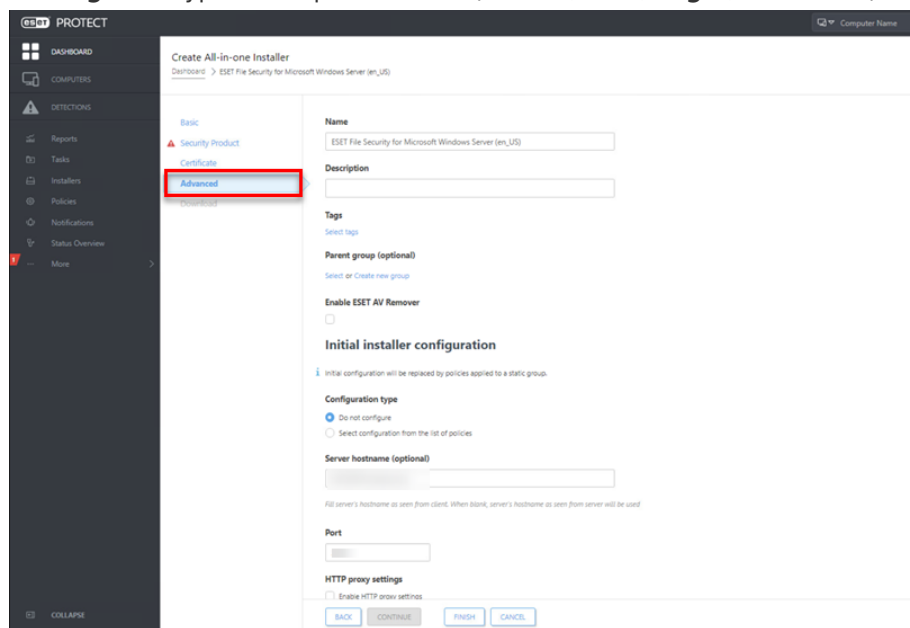
 Only ESET endpoint products version 6.4 and later will allow automatic product activation. If you choose version 6.3 or earlier products, automatic product activation will not work and you will have to activate the product later. ESET endpoint products version 6.4 and later will be automatically activated during the installation.



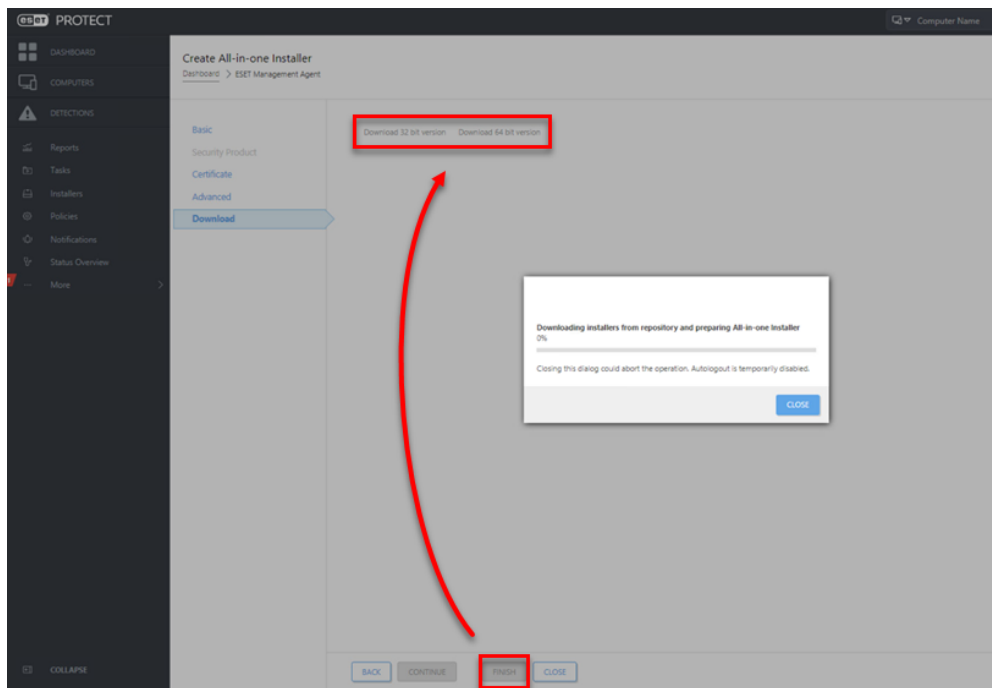
5. If you specified a passphrase during the installation of ESET PROTECT, click **Certificate** and type in your **Certificate passphrase**.



6. Click **Advanced**. In this section you can:
- Set the **Name**, **Description**, **Tags** and a **Parent group** for the installer.
 - Select the check box next to **Enable ESET AV Remover** to include ESET AV Remover in the installer.
 - In the **Initial installer configuration**, select a policy that will be applied to the ESET Management Agent.
 - **Server hostname** and **Port** are automatically selected for you.
 - If you use an HTTP Proxy: Select the check box next to **Enable HTTP Proxy settings** and type the required details (**Server**, **Port**, **Login**, **Password**).



7. Click **Finish** and click the download for 32-bit or 64-bit version depending on your system.



8. Save the file to a shared location and access it from the client computer where it will be installed.
9. Run the All-in-one installation package file, for example, `ESETPROTECT_Installer_x64_en_US.exe` on the client computer to start the Setup Wizard using a domain Administrator account.

For illustrated instructions for the Setup Wizard, see the [ESET Package Installer](#) Online Help topic.

Create an All-in-one silent installation package in ESET PROTECT Web Console

You can install an All-in-one installation package generated from the ESET PROTECT Web Console on the client device without user interaction (silent mode). Make sure the following requirements are met before using this method:

- Store the installation package locally on the designated device
- Perform the silent installation on an account with administrator privileges
- We recommend that you run the command prompt as an administrator
- Use the .exe installer type

If all of the above requirements are met, follow the steps below to perform a silent install:

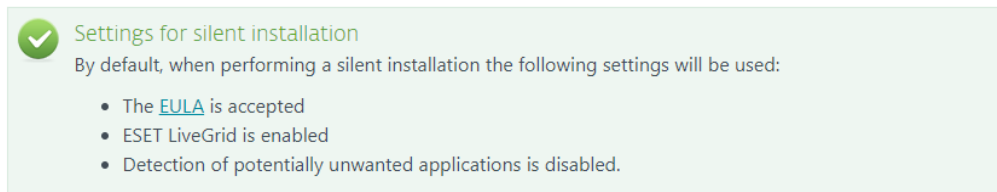
1. Navigate in the command line to the installation package location.
2. Execute the installation package with the `--silent` parameter, for example, `C:\Users\Admin\Downloads>ESETPROTECT_Installer_x64_en_US.exe --silent`.

If you enabled ESET AV Remover during the creation of the All-in-one installation package, you can now use the parameter `--avr-disable` to disable the ESET AV

Remover, for

example, C:\Users\Admin\Downloads>ESETPROTECT_Installer_x64_en_US.exe --silent --avr-disable.

3. The installation will now proceed in silent mode (no window or progress bar will appear during the installation).
4. The package will be installed with default settings.



These default settings can be changed after the installation is completed. They can also be modified in your installation package during [Configuration](#). In the **Configuration type** field, you can **Select configuration from the list of policies**. Select a policy for ESET Management Agent and a policy for your ESET security product (you cannot create a new policy at this point).