

# ESET Tech Center

Kennisbank > ESET Endpoint Encryption > Encrypt additional disks or disk partitions from ESET Endpoint Encryption Server

## Encrypt additional disks or disk partitions from ESET Endpoint Encryption Server

Steef | ESET Nederland - 2021-05-19 - Reacties (0) - ESET Endpoint Encryption

### Issue

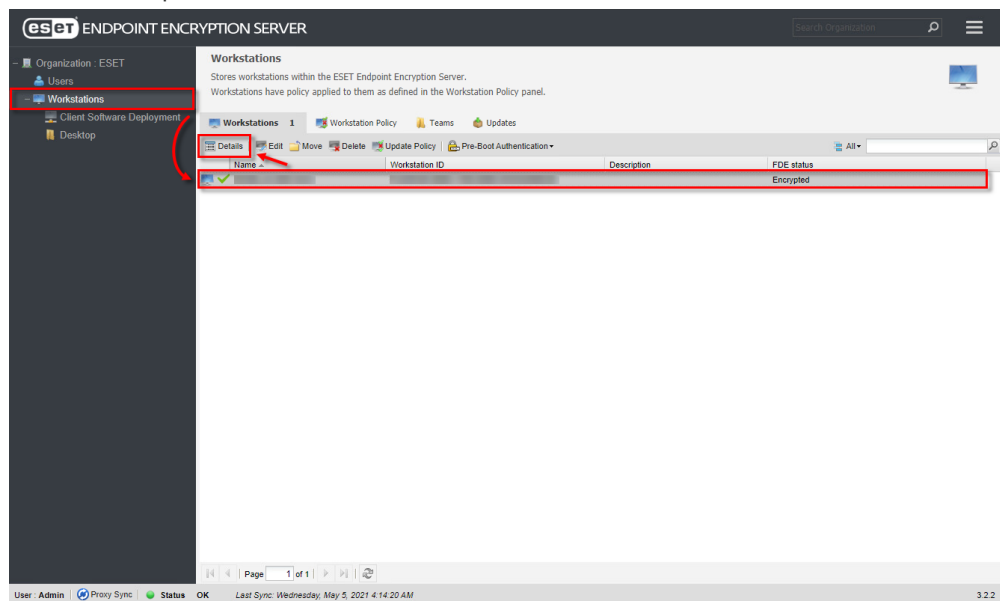
- Encrypt additional or secondary disks or disk partitions from ESET Endpoint Encryption Server

### Details

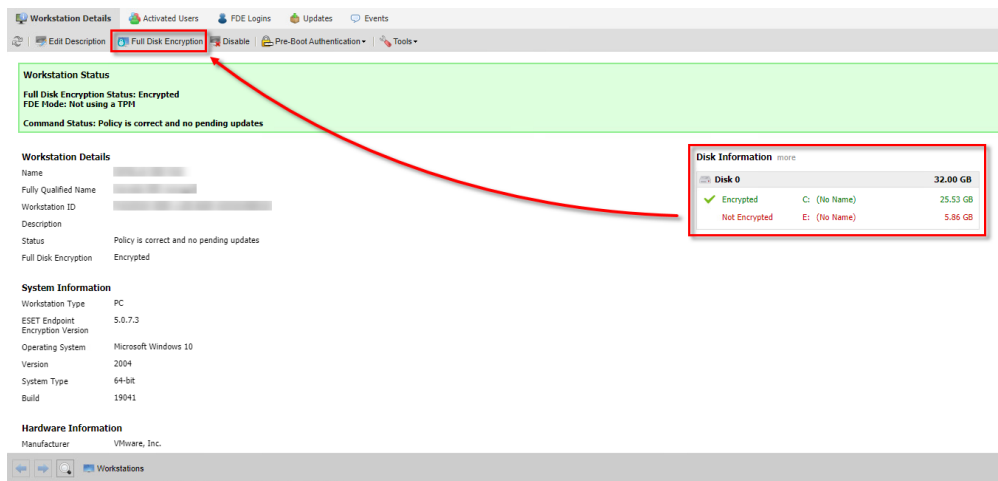
You can encrypt secondary or additional disks and disk partitions of workstations that are managed by the ESET Endpoint Encryption Server.

### Solution

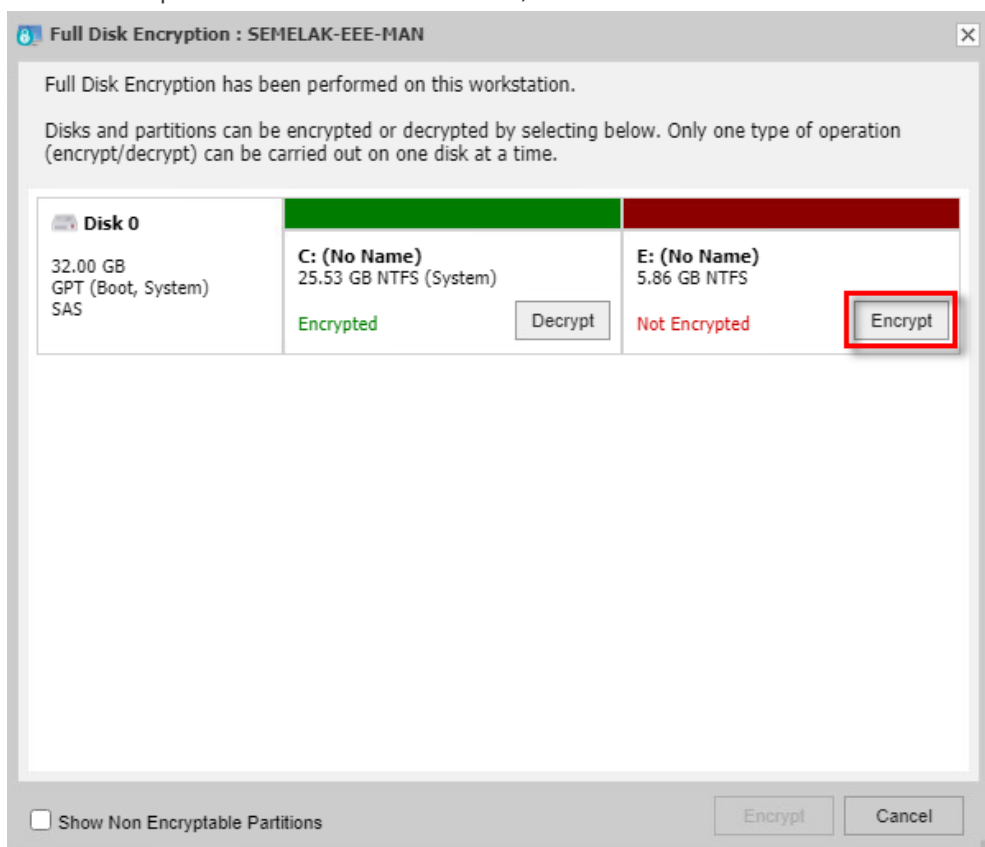
1. Log in to the ESET Endpoint Encryption (EEE) Server.
2. Click **Workstations**, select the workstation on which you want to encrypt additional disks or disk partitions and click **Details**.



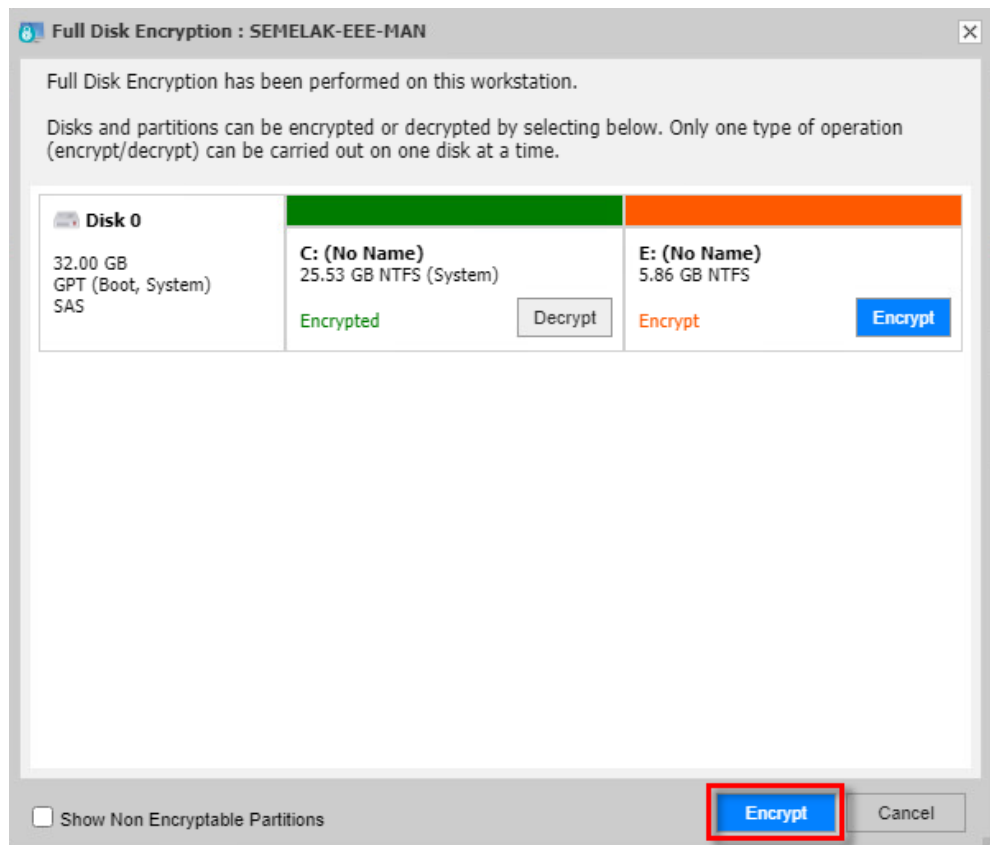
3. In the **Disk Information** section, ensure that the encryption progress of other disks has been completed and click **Full Disk Encryption**. The **Full Disk Encryption** option is only available if other encryption/decryption processes are completed.



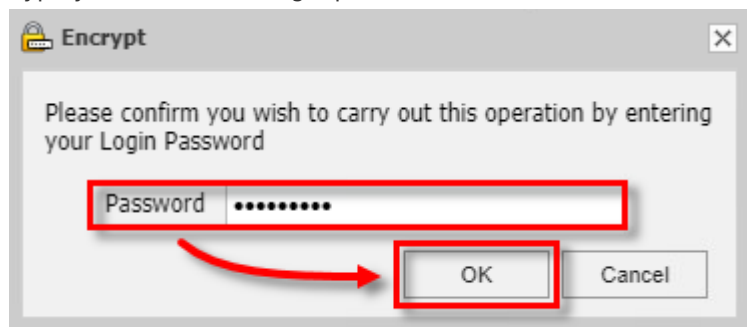
- Click **Encrypt** next to the disks or disk partition you want to encrypt (unencrypted disks or disk partitions are marked dark red)



- Click **Encrypt** in the bottom right corner of the dialog window.



6. Type your EEE Server login password and click **OK** to confirm the operation.



The encryption command will be received automatically when the workstation next checks in with the cloud. To speed up the process, you can [manually synchronize the ESET Endpoint Encryption Client and Server](#).