

ESET Tech Center

[Kennishbank](#) > [Legacy](#) > [ESET Security Management Center](#) > [Export SysInspector log files from client computers in ESET Security Management Center \(7.x\)](#)

Export SysInspector log files from client computers in ESET Security Management Center (7.x)

Anish | ESET Nederland - 2018-09-14 - [Reacties \(0\)](#) - [ESET Security Management Center](#)

Issue

- Use a client task to retrieve SysInspector log files from your client computers
- Use ESET Security Management Center [to view ESET SysInspector logs in the ESMC Web Console](#)

Solution

1. [Open ESET Security Management Center Web Console](#) (ESMC Web Console) in your web browser and log in.
2. Click **Client Tasks** → **ESET Security Product** → **SysInspector Log Request** and then click **New**.

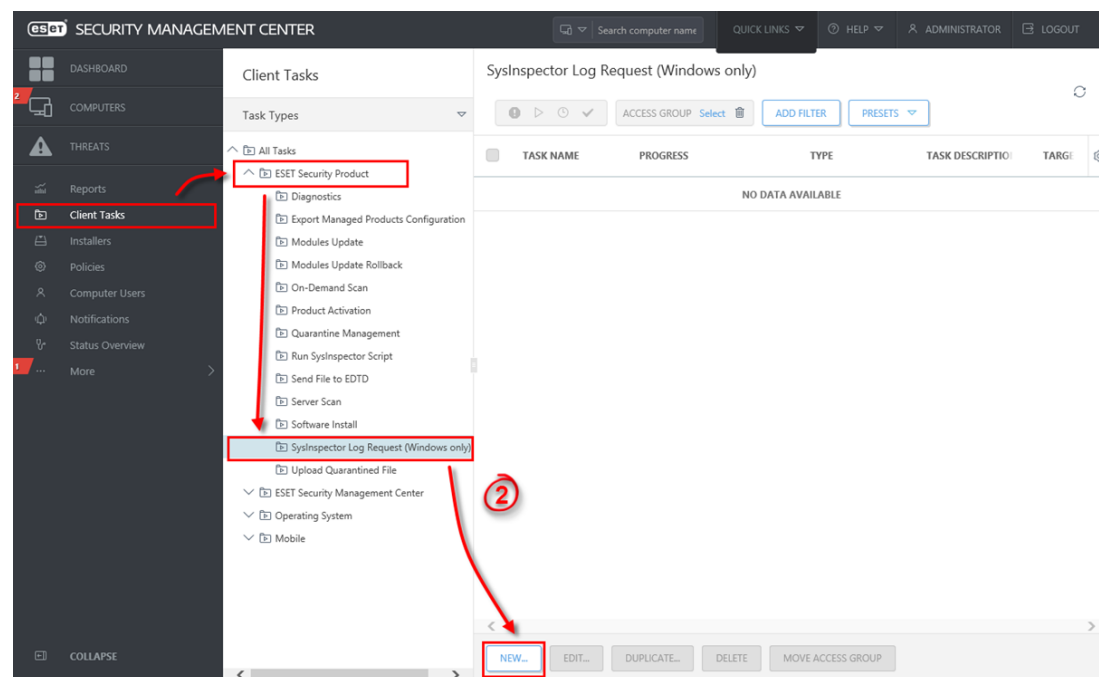


Figure 1-1

Click the image to view larger in new window

1. Type a name for your new task in the **Name** field.

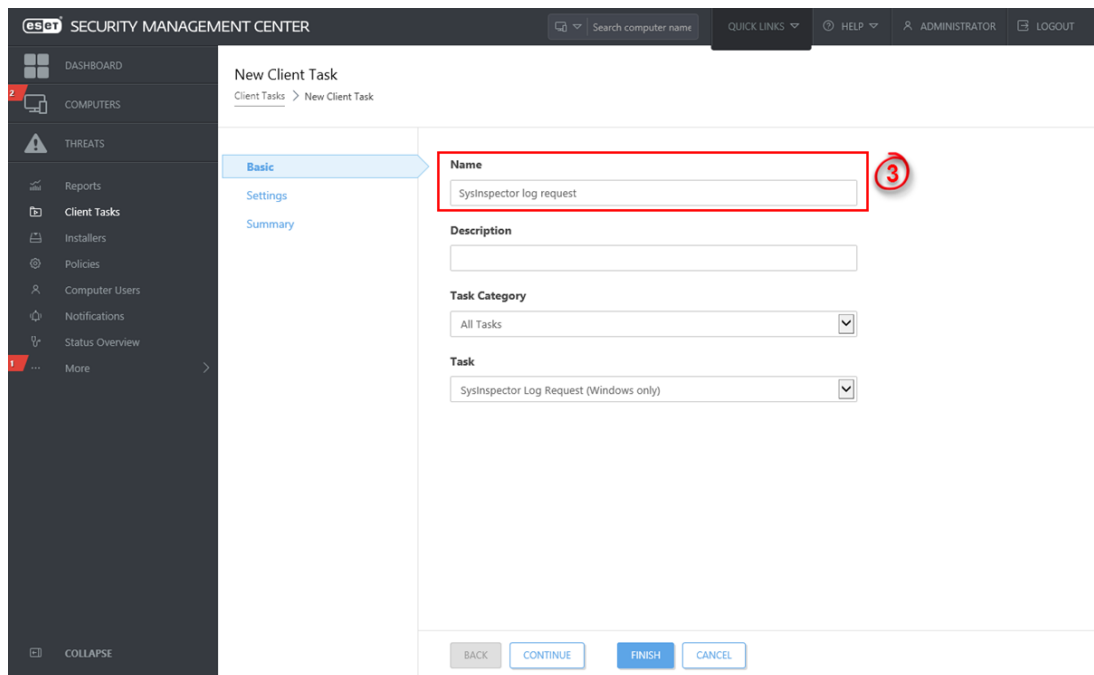


Figure 1-2

Click the image to view larger in new window

1. Click the **Settings** section to configure settings for the task. Please note that **you will add Targets after the task is created**.
2. Click **Finish** when you are finished making changes to your task.
3. Click **Create Trigger** when you are asked whether you want to add a trigger for the client task. Click for instructions to [Create a Trigger and add Target computers or groups to execute a Client Task](#).

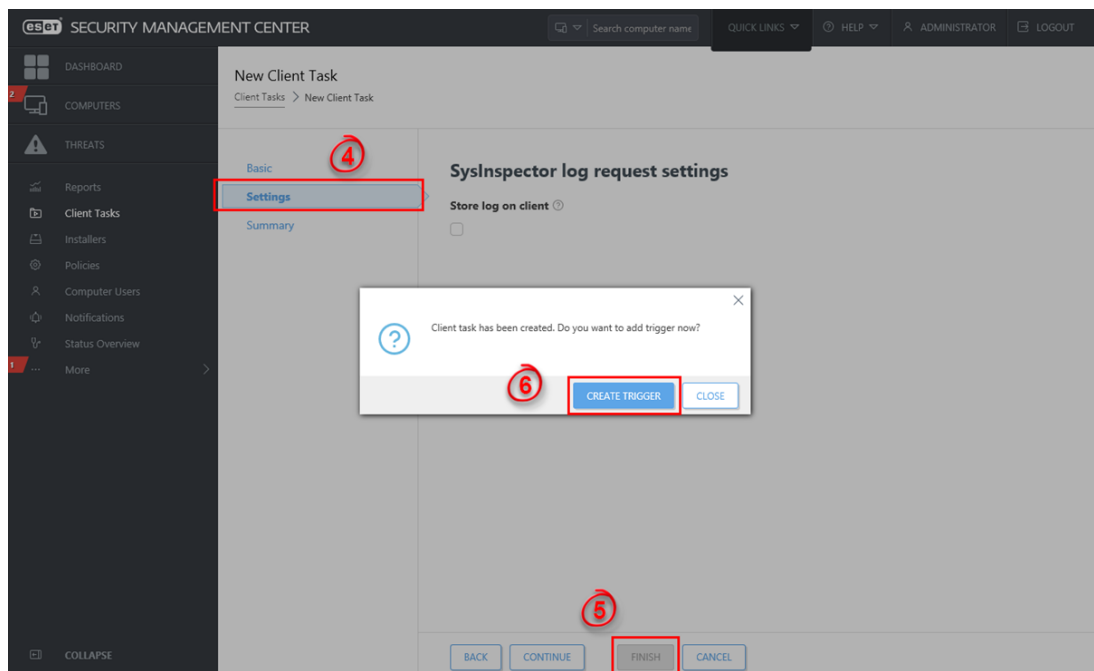


Figure 1-3

Click the image to view larger in new window

1. Click **Finish** and your new task will be displayed in the **Client Tasks** window. To check the status of the task, click it and select **Show Details**.

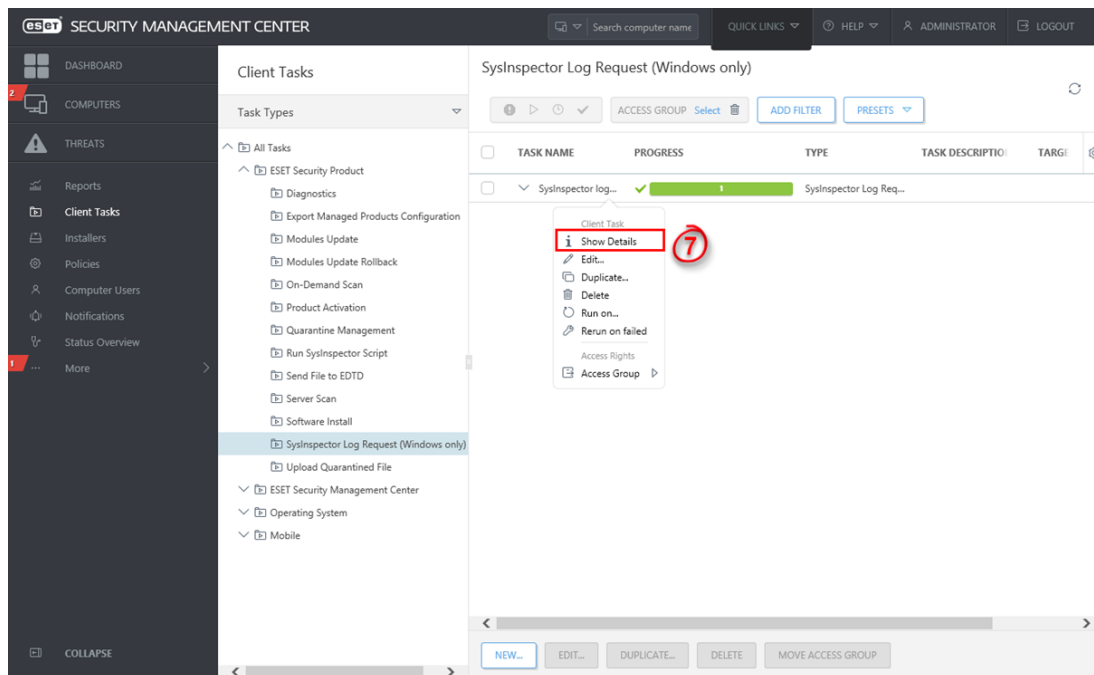


Figure 1-4

Click the image to view larger in new window

1. Click the **Executions** tab. The **Last Status** column displays information about the completion of your task.

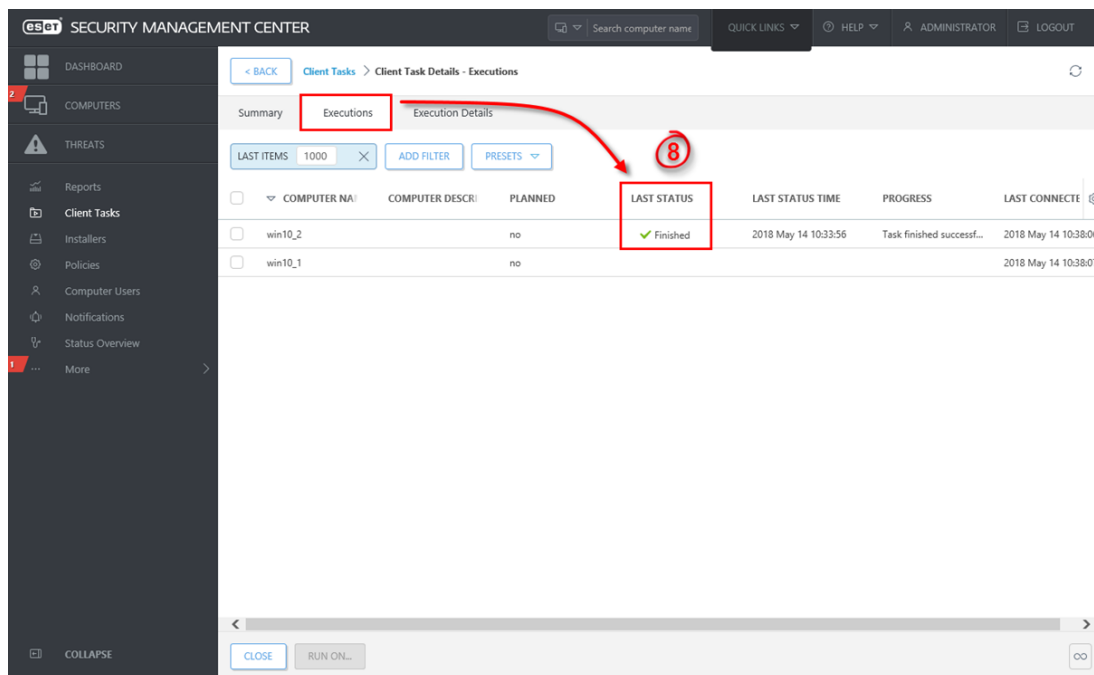


Figure 1-5

Click the image to view larger in new window

View ESET SysInspector logs in ESMC Web Console

In ESET Security Management Center, you can view SysInspector logs you created in steps 1 - 8 from the previous section. To view the ESET SysInspector logs, follow the instructions below:

1. Click the **Execution Details** tab.

2. Click the SysInspector client task you created and then click **Open SysInspector Log Viewer** (you can also download the SysInspector log file from the same context menu or use the alternative download method below).

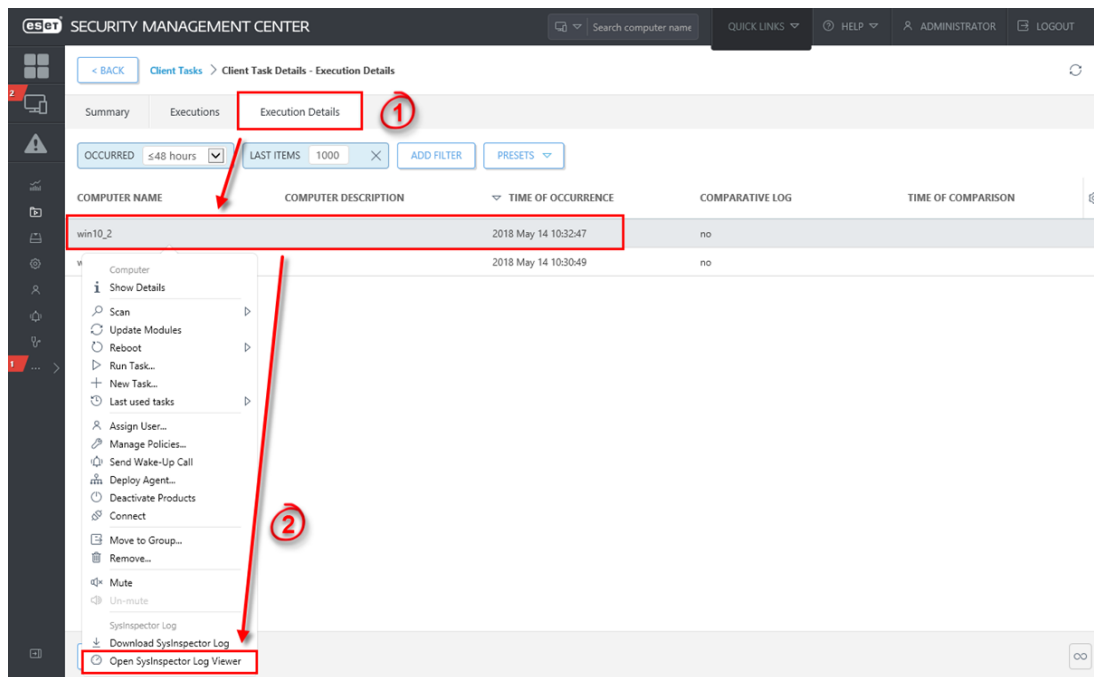


Figure 2-1

Click the image to view larger in new window

View SysInspector log files in Dashboard (alternative viewing method)

1. Click **Dashboard**, click **Add Dashboard**, type in a name for the new dashboard and then click **Add Dashboard**.

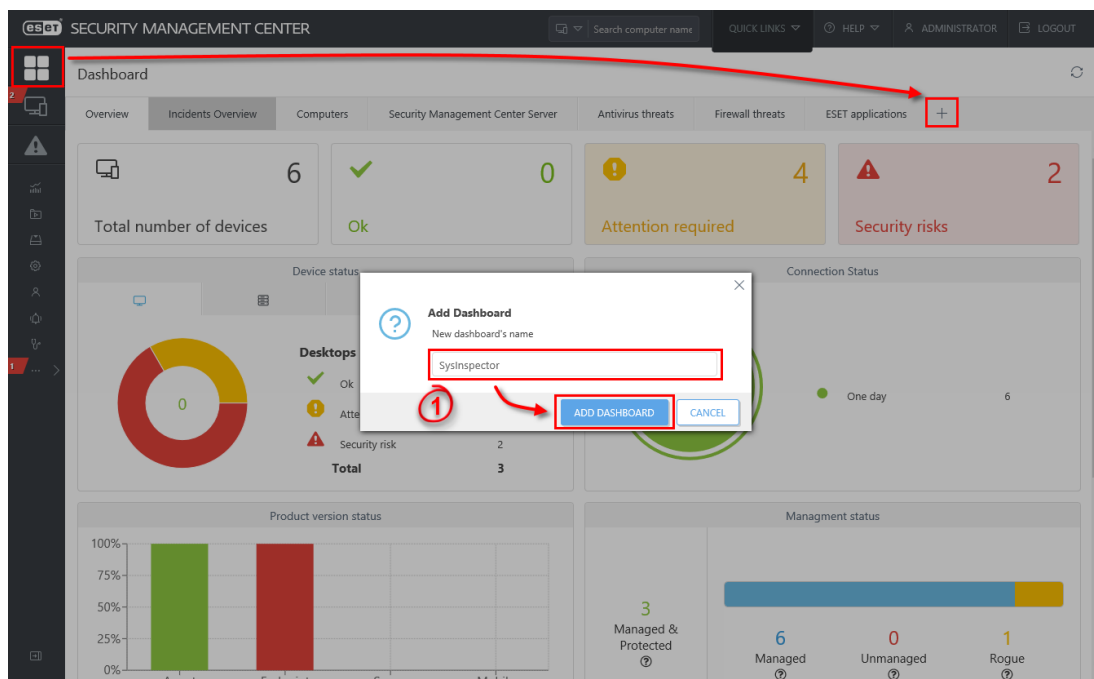


Figure 3-1

Click the image to view larger in new window

1. Click one of the tiles and a pop-up screen will display available report templates.
2. Expand **Automation**, click **SysInspector snapshots history in last 30 days** and then click **OK**.

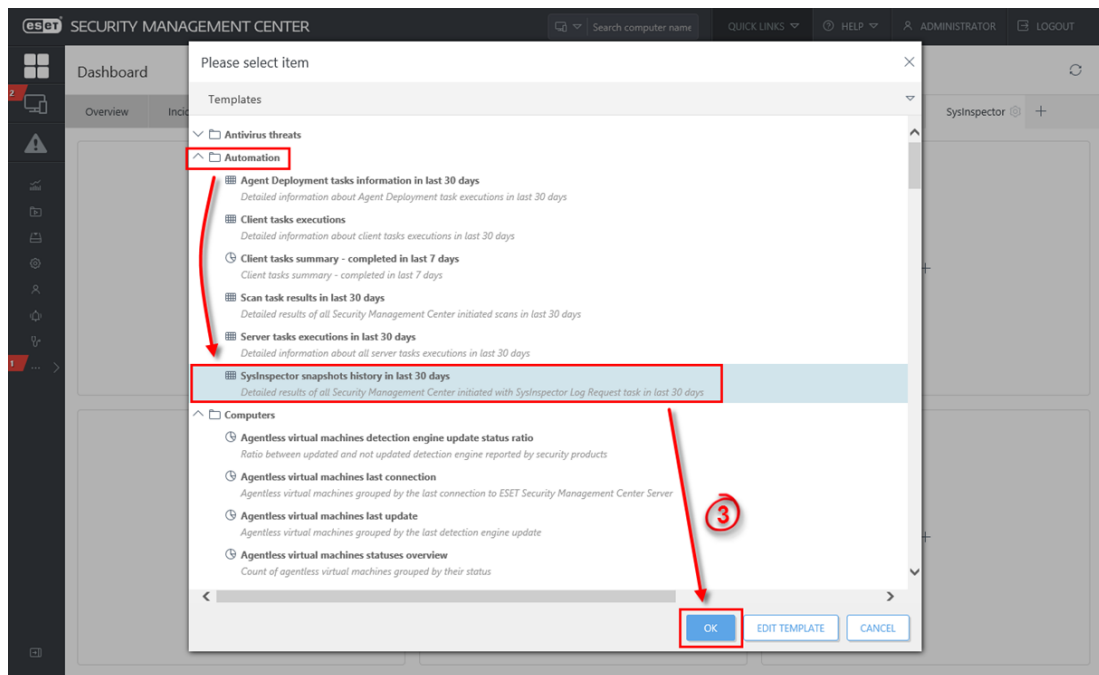


Figure 3-2

Click the image to view larger in new window

1. The report will be displayed. Click the task name and select **Open SysInspector Log Viewer**.