

ESET Tech Center

Kennisbank > Endpoint Solutions > What is ESET SysInspector?

What is ESET SysInspector?

Mitch | ESET Nederland - 2023-08-14 - Reacties (0) - Endpoint Solutions

Issue

- Information about ESET SysInspector
- Key features
- System requirements
- Download

Solution

Information about ESET SysInspector

ESET SysInspector is a free, state-of-the-art diagnostic tool for Windows-based systems. It examines your operating system and captures details such as running processes, registry content, startup items and network connections.

When a snapshot of the system is created, ESET SysInspector applies heuristics to assign a risk level for each object logged. The intuitive main program window enables the user to easily sort through the large volume of data by using a slider to select objects of a specific color-coded risk level for closer examination.

ESET SysInspector is a convenient utility for the toolbox of every IT expert and first responder. <https://help.eset.com/esi/1/en-US/>.

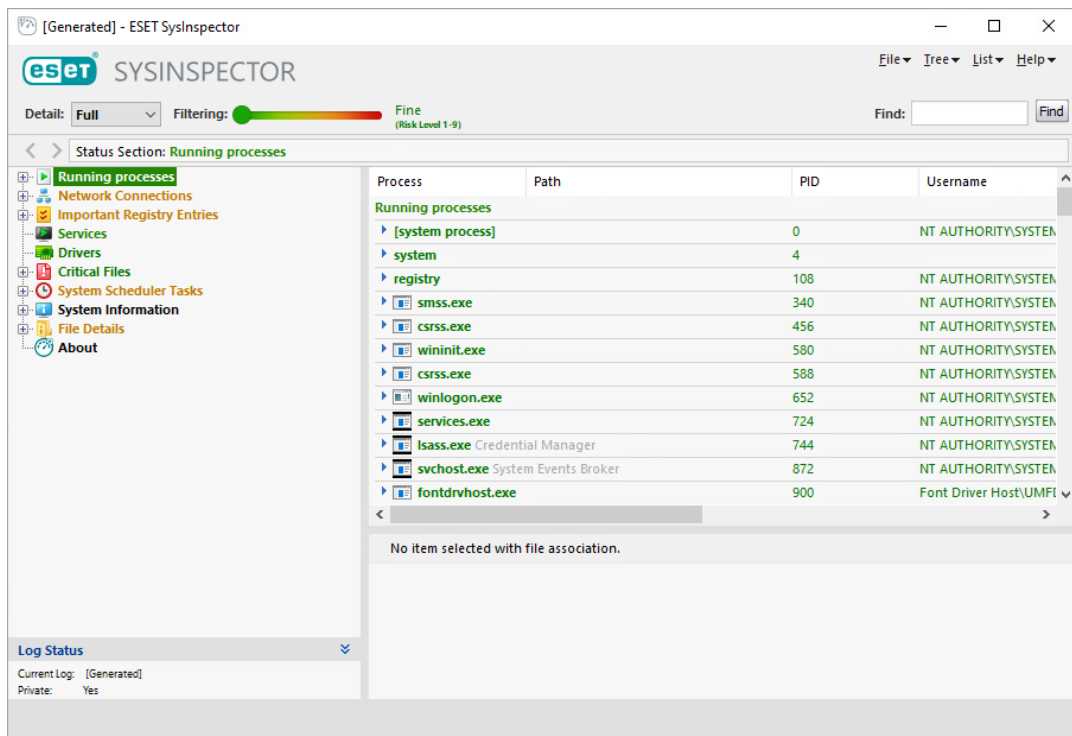


Figure 1-1

Key features

- Ability to generate and save a detailed log to be used by an IT expert or uploaded to an online forum for diagnosis
- Option to exclude private, personal information from being saved in logs
- Integrated Anti-Stealth technology enables the discovery of hidden objects (for example, rootkits) in MBR, registry entries, drivers, services and processes
- The ability to compare two existing logs for differences makes it easy to detect changes over time
- Log entries are assigned a color code risk level for easy filtering
- Intuitive hierarchical navigation of logs
- Fast and compact single-file executable, ideal for first responders to run from a USB drive without lengthy installation

System requirements

Microsoft® Windows® 11, 10, 8.1, 8, 7, Vista, Home Server

Microsoft® Windows® Server 2019, Server 2016, Server 2012, Server 2008

- 1 GHz 32-bit (x86) / 64-bit (x64)
- 512MB RAM of system memory
- 10MB available space
- Super VGA (800 x 600)

Microsoft® Windows® XP

Microsoft® Windows® Server 2003

- 400 MHz 32-bit (x86) / 64-bit (x64)
- 128MB RAM of system memory
- 10MB available space
- Super VGA (800 x 600)

Download

- [64-bit version](#)
 - [32-bit version](#)
-